

Easy Lift Equipment Co., Inc.

2 Mill Park Court, Newark, Delaware 19713 - Phone: 800-233-1800 / 302-737-7000



EASY LIFT EQUIPMENT ROLL HANDLING SOLUTIONS

EASY LIFT EQUIPMENT ROLL HANDLING SOLUTIONS

Contents

EasyLift Roll Transporters	3-4
Roll Transporters with Roll Posts (RP).....	3
Roll Transporters with Roll Posts with Rollers (RPR)	3
Folding Roll Post Receiver.....	4
Roll Transporter with a V-Pan	4
Folding Jib & Abaco-Style Clamp	5
Versatility & Additional Options of the Roll Transporter	5
Narrow Aisle Roll Manipulators (ELDR)	6-8
ELDR with RCR 1324-16 Roll Clamp Rotator.....	6
ELDR with RCR 1626-16 Roll Clamp Rotator.....	6
Small Roll Adapter.....	7
ELDR with SRCR Clamp.....	8
Roll Manipulators (ER)	9-15
ER with RCR 1324-16 Roll Clamp Rotator.....	9
ER with RCR 1626-16 Roll Clamp Rotator.....	9
ER with RCR 2336-16 Roll Clamp Rotator.....	10
ER with RCR 3148-16 Roll Clamp Rotator.....	10
Small Roll Adapter.....	11
ER with SRCR Clamp.....	12
ER with LRCR Clamp.....	13
Roll Manipulator (ER) Additional Options.....	14-15
Exchangeable Battery Option for ELDR & ER models	16
Roll-Haulers (RH)	17-28
RH Features, Battery Options, Charging the Equipment & Control Box Functions	17-21
RH with RCR 1324-16 Roll Clamp Rotator	22
RH with RCR 1626-16 Roll Clamp Rotator	23
RH with RCR 2336-16 Roll Clamp Rotator	24
RH with RCR 3148-16 Roll Clamp Rotator	25
RH with SRCR Clamp	26
RH with LRCR Clamp	27
Cylinder Handling with CCR Clamp	28
Roll-Hauler (RH) Additional Options.....	29
Battery Roll-Out Tray & Charging Station	30
Self-Powered Roll Transporters (RH4000 & RH6000)	31
Self-Powered Straddle Stackers (ERP)	32-33
ERP with Roll Forks (RF).....	32
ERP with Roll Arms (RA).....	32
ERP with Hydraulic Lip Shovel (S50).....	33
RH with Roll-Posts & Counter-Balanced Walkie Stackers	33
Roll Clamp Rotator Attachments (RCR20-40 & RCR30-50)	34-37
Remote-Control Box & DC Box Details.....	34
RCR20-40 Attachment.....	35
RCR30-50 Attachment.....	35
Carriage Mounting & Unmounting.....	36-37

EASYLIFT ROLL TRANSPORTERS

Easy Lift Equipment manual push around Roll Transporters help eliminate the risk of injuries caused by manually handling rolls. EasyLift Roll Transporters are available in capacities of up to 600lbs. (270kg), based off the Roll Post load centers, and feature lift heights up to 60" (152 cm) above floor level. Designed to lift, and (with V-Pans) rotate a wide range of roll weights and diameters from the floor or a pallet; then transport and place those rolls onto converting machines. Our manual push around units feature Darcor® ergonomic casters, which enable the operator to easily maneuver a fully loaded machine with minimal effort.

ROLL TRANSPORTERS WITH ROLL POSTS

ROLL POSTS (RP) are designed to lift, transport, & place horizontal rolls from pallets to packaging machinery. RPs are adjustable on the mast and available in various lengths depending on capacity requirements.

These posts come standard with a 2.5" (6.4 cm) post diameter featuring a tapered end for smooth entry into a roll's core.

Standard RPs come in lengths of:

- **19" (48.7 cm) long** with 15" (38 cm) usable and 4" (10 cm) taper.
- **25" (63.5 cm) long** with 21" (53 cm) usable and 4" (10 cm) taper.
- **30" (76 cm) long** with 26" (66 cm) usable and 4" (10 cm) taper.

Narrow Aisle Roll Transporter with Roll Post



Close-up of Roll Post



Close-up of Roll Post with a large roll



ROLL POSTS WITH ROLLERS (RPR) are adjustable on the mast and available in various lengths depending on project needs and capacity requirements. RPRs feature 11/16" (1.75 cm) incorporated bearings spaced 3" (7.6 cm) apart down the length of the aluminum roll post. RPRs significantly reduce the push and pull forces that are required for the operator to transfer heavy rolls from post to post, when compared to a standard roll post. A safety pin is included on the end of the post to prevent the roll from shifting while being transported.

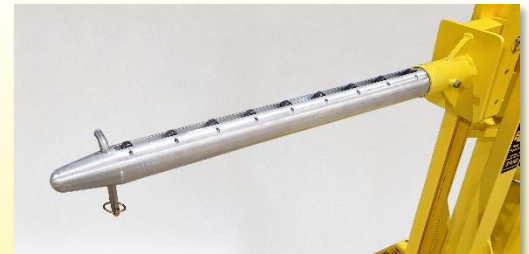
Standard RPRs come in lengths of:

- **25" (63.5 cm) long** with 21" (53 cm) usable and 4" (10 cm) taper.
- **30" (76 cm) long** with 26" (66 cm) usable and 4" (10 cm) taper.

Narrow Aisle Roll Transporter with Roll Post with Rollers



Close-up of Roll Post with Rollers



Close-up of Roll Post with Rollers Safety Pin Securing a Roll



ROLL TRANSPORTERS WITH ROLL POSTS (CONT.)

FOLDING ROLL POST RECEIVER is an available option for any style RP or RPR. The design of the folding Roll Post allows one operator to quickly and easily adjust the roll post from horizontal operational position to vertical storage position. A dual safety system includes a spring-loaded plunger and additional safety pin, with lynch pin, which securely holds the roll post in the fully upright storage position. Placing the roll post in storage position allows the unit to require a smaller footprint when not in use as well as helps to prevent tripping hazards or injuries that may be sustained if the roll post were left in a horizontal orientation.

Close-up of folding Roll Post with rollers



Folding Roll Post with rollers in horizontal operational position



Folding Roll Post with rollers in vertical storage position



ROLL TRANSPORTERS WITH V-PAN

V-PANS are designed to handle a roll up to 30" (76 cm) wide by 30" (76 cm) in diameter and weighing up to 600 lbs. (272 kg), contingent on equipment configuration. The stainless-steel rotating V-Pan is designed to be low profile and, when fully lowered, sit flush against a standard 40" x 48" pallet.

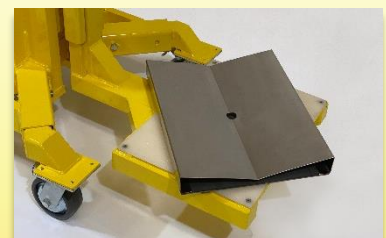
V-Pan with roll partially rotated



V-Pan shown flush against a standard pallet



Showing the stainless-steel rotating V-Pan



Easy Lift Equipment, Inc.
2 Mill Park Ct.
Newark, DE. 19713
Email: sales@easylifteqpt.com

800-233-1800
or 302-737-7000
Fax: 302-737-7333
www.easylifteqpt.com

ROLL TRANSPORTERS WITH FOLDING JIB & ABACO-STYLE CLAMP

FOLDING JIB & ABACO-STYLE CLAMP is available for applications that require the handling of very thin roll materials. The use of this style clamp helps transport the rolls, while also decreasing the chance of the rolls telescoping while being maneuvered. The Roll-Transporter with Jib seen here is designed to handle an Abaco Bison Lifter (model # ABL150A). The placement of the Abaco Bison Lifter clamp position on the Easy Lift jib will be determined by the roll diameters being handled. The belt cradle supplies additional support for the roll and helps prevent it from becoming unwieldy during transportation. The optional adjustable belt cradle can be moved on or down on the mast to accommodate different roll dimensions. The controls on the top of the DC cabinet allows the operator to raise or lower the roll accordingly. The swiveling turn-buckle connected to the jib allows the roll to be spun 360° endlessly, either left or right, which allows the operator to rotate the roll for loading to or from a post or converting equipment.

DC Powered Roll-Transporter with Abaco-Style clamp holding roll



Close-up of Abaco-Style Clamp holding a roll



Abaco-style clamp loading roll onto post



Folding Jib in vertical storage position



VERSATILITY & ADDITIONAL OPTIONS

THE VERSATILITY OF THE ROLL TRANSPORTER allows customers to interchange multiple attachments using the same Roll Transporter. This allows the customer to quickly switch between a Roll Post, V-Pan, or a Jib with an Abaco-style clamp as needed. This is ideal when handling various types of roll materials over multiple applications.



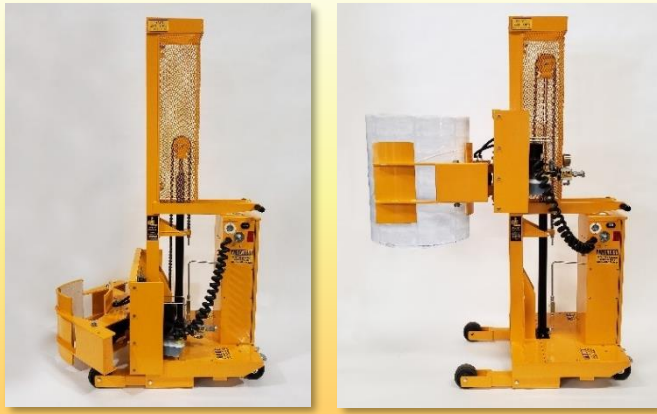
SCALE SYSTEM AND/OR PRINTER. Roll Transporters with scales (and an optional printer) provide an efficient and easy method for weighting inventory while eliminating the need to transport product to floor scales for weighing. These indicators are available from multiple manufacturers and can be integrated with existing systems to maintain consistency and minimize training throughout your site.



ELDR MODELS FOR HANDLING ROLLS – RCR CLAMPS

ELDR MODELS WITH AN RCR 1324-16 CLAMP FOR HANDLING ROLLS – The RCR 1324-16 clamp features two 16” (40.6 cm) clamping jaws, and a 16” (40.6 cm) back pad, each lined with white SBR rubber to provide a durable yet secure non-marking surface to grip a roll. The 16” (40.6 cm) high clamping pads are ideal for clamping more sensitive roll materials, as they spread the clamping force over a larger surface area which helps to minimize excessive distorting or impressions to more fragile roll materials. These RCR 1324-16 clamps can handle a wide range of roll materials from 13” (33 cm) to 24” (61 cm) in diameter and weighing up to 500 lbs. (226 kgs). To load rolls to and from converting equipment these clamps can rotate 360° endlessly either left or right. A small roll adapter is also available which reduces the clamping range diameter by 5” (13 cm). For handling shorter width rolls 8” (20 cm) clamping pads are also available.

**ELDR DC powered staddle leg model
with RCR 1324-16 clamp**



**ELDR DC powered counterbalanced model
with RCR 1324-16 clamp**



ELDR MODELS WITH AN RCR 1626-16 CLAMP FOR HANDLING ROLLS – The RCR 1626-16 clamp features two 16” (40.6 cm) high clamping pads, and a 16” (40.6 cm) back pad, each lined with white SBR rubber to provide a durable yet secure non-marking surface to grip a roll. The 16” (40.6 cm) high clamping pads are ideal for clamping more sensitive roll materials, as they spread the clamping force over a larger surface area which helps to minimize excessive distorting or impressions to more fragile roll materials. RCR 1626-16 clamps can handle a wide range of roll materials from 16” (41 cm) to 26” (66 cm) in diameter and weighing up to 500 lbs. (226.8 kgs). To load rolls to and from converting equipment these clamps can rotate 360° endlessly either left or right. A small roll adapter is also available which reduces the clamping range diameter by 5” (13 cm). For handling shorter width rolls 8” (20 cm) clamping pads are also available.

**ELDR DC Powered Staddle Leg Model
with RCR 1626-16 Clamp**



ELDR MODELS FOR HANDLING ROLLS – RCR CLAMP OPTIONS

SMALL ROLL ADAPTER (for RCR-style clamps) which reduces the clamping range diameter by 5” (13 cm). Each Small Roll Adapter consists of one individual curved section with white non-marking rubber vulcanized to the metal curve. The adapter is then slid through or around the clamp back pad and locked into place by inserting two stainless-steel retaining pins & circle cotter pins on a lanyard. Available in safety orange powder coating, FDA compliant metallic grey powder coating, or stainless-steel construction.

RCR1324-8 with Adapter

Reduces the clamping range to
8” (20 cm) to 19” (48 cm) in diameter



RCR1324-16 with Adapter

Reduces the clamping range to
8” (20 cm) to 19” (48 cm) in diameter



RCR1626-8 with Adapter

Reduces the clamping range to
11” (28 cm) to 21” (53 cm) in dia.



RCR1626-16 with Adapter

Reduces the clamping range to
11” (28 cm) to 21” (53 cm) in dia.



RCR2336-16 with Adapter

Reduces the clamping range to
18” (46 cm) to 31” (79 cm) in dia.



**EASY LIFT EQUIPMENT, INC. IS AN
ISO 9001: 2015 CERTIFIED COMPANY**



Easy Lift Equipment, Inc.
2 Mill Park Ct.
Newark, DE. 19713
800-233-1800
or 302-737-7000
Fax: 302-737-7333
Email: sales@easylifteqpt.com
www.easylifteqpt.com



ISO 9001: 2015 Certified Company

**Most Roll Manipulators are available on a 30-day trial toward purchase for first time buyers.
The cost of the 30-day trial is 15% of the retail purchase price with options.**

ELDR MODELS FOR HANDLING ROLLS – SRCR CLAMP

ELDR MODELS WITH AN SRCR CLAMP FOR HANDLING ROLLS – The SRCR clamp is designed for handling a roll from 12” (30 cm) to 26” (66 cm) in diameter and weighing up to 500 lbs. (226.8 kg). The larger hydraulic clamping arm is equipped with two position settings, which allows the clamp to handle this wide range of roll diameters. The most valuable feature of this clamp is its ability to grip and handle rolls from either a vertical or horizontal position. This feature is possible due to the SRCR clamp having a lower fixed arm and an upper hydraulic clamping arm. The lower arm acts as a scoop, allowing the clamp to get a clamping pad underneath a horizontal roll. The hydraulic arm then clamps down securing the roll for rotation or transport. The SRCR clamp comes standard with 16” (40.6 cm) high clamping pads but is also available with optional 8” (20.3 cm) high clamping pads. Both clamping pads are lined with SBR rubber to provide a durable yet secure non-marking surface to grip a roll. This clamp rotates 360° endlessly either left or right at a controlled speed, which enables accuracy when rotating a roll from vertical to horizontal positioning, or vice-versa. The larger hydraulic clamping arm is equipped with two position settings: The inner pin position handles 12” (30 cm) to 22” (56 cm) diameter rolls, while the outer pin position handles 18” (46 cm) to 26” (66 cm) diameter rolls.

ELDR DC Powered Staddle Leg Model with SRCR Clamp



**SRCR Inner Pin Position
Clamping range
12” (30 cm) to 22” (56 cm)
in diameter.**



**SRCR Outer Pin Position
Clamping range
18” (46 cm) to 26” (66 cm) in
diameter.**



**SRCR Clamp
picking or placing
a horizontal roll**

**SRCR Clamp
picking or placing
a vertical roll**



ROLL MANIPULATORS (ER) WITH RCR CLAMPS

ROLL MANIPULATOR (ER) WITH AN RCR 1324-16 CLAMP (FOR HANDLING ROLLS) – The RCR 1324-16 clamp features two 16” (41 cm) high clamping jaws, and a 16” (41 cm) high back pad, each lined with white SBR rubber to provide a durable yet secure non-marking surface to grip the roll. The 16” (41 cm) high clamping pads are ideal for clamping more sensitive roll materials, as they spread the clamping force over a larger surface area which helps to minimize excessive distorting or impressions to more fragile roll materials. These RCR clamps can handle a wide range of roll materials from 13” (33 cm) to 24” (61 cm) in diameter and weighing up to 1,200 lbs. (544 kgs), contingent on equipment configuration. To load rolls to and from converting equipment these clamps can rotate 360° endlessly either left or right. A small roll adapter is also available which reduces the clamping range diameter by 5” (13 cm). For handling shorter width rolls 8” (20.3 cm) clamping pads are also available.

ER DC powered models with RCR 1324-16 clamp



RCR1324-16 close-up



ER straddle leg model
w/ RCR1324-16 clamp



ER counterbalance model
w/ RCR1324-16 clamp

ROLL MANIPULATOR (ER) MODELS WITH AN RCR 1626-16 CLAMP (FOR HANDLING ROLLS) – The RCR 1626-16 clamp features two 16” (41 cm) high clamping pads, and a 16” (41 cm) high back pad, each lined with white SBR rubber to provide a durable yet secure non-marking surface to grip the roll. The 16” (41 cm) high clamping pads are ideal for clamping more sensitive roll materials, as they spread the clamping force over a larger surface area, helping to minimize excessive distorting or impressions to more fragile roll materials. RCR clamps can handle a wide range of roll materials from 16” (41 cm) to 26” (66 cm) in diameter and weighing up to 1,200 lbs. (544 kgs), contingent on equipment configuration. These clamps can rotate 360° endlessly either left or right. A small roll adapter is also available which reduces the clamping range diameter by 5” (13 cm). For handling shorter width rolls 8” (20 cm) high clamping pads are also available.

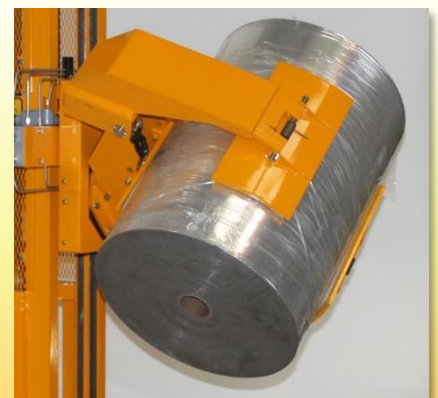
ER DC powered models with RCR 1626-16 clamp



RCR1626-8* close-up
(*shown here with 8” clamping pads)



ER straddle leg model w/
RCR1626-16 clamp & scale



RCR1626-16 clamp
with a roll

ROLL MANIPULATORS (ER) WITH RCR CLAMPS

ROLL MANIPULATOR (ER) WITH AN RCR 2336-16 CLAMP – The RCR 2336-16 clamp features two 16” (41 cm) high clamping pads, and a 16” (41 cm) high back pad, each lined with white SBR rubber to provide a durable yet secure non-marking surface to grip the roll. The 16” (41 cm) high clamping pads are ideal for clamping more sensitive roll materials, as they spread the clamping force over a larger surface area, helping to minimize excessive distorting or impressions to more fragile roll materials. RCR clamps can handle a wide range of roll materials from 23” (58 cm) to 36” (91 cm) in diameter and weighing up to 1,000 lbs. (453.6 kgs), contingent on equipment configuration. To load rolls to and from converting equipment these clamps can rotate 360° endlessly either left or right. A small roll adapter is also available which reduces the clamping range diameter by 5” (13 cm). For handling shorter width rolls 8” (20 cm) high clamping pads are also available.

ER DC models with RCR 2336-16 clamp



RCR2336-16 close-up



ER straddle leg model
with RCR2336-16 clamp



ER straddle leg model with
RCR2336-16 clamp with a roll

ROLL MANIPULATOR (ER) WITH AN RCR 3148-16 CLAMP – The RCR 3148-16 clamp features two 16” (41 cm) high clamping pads, and a 16” (41 cm) high back pad, each lined with white SBR rubber to provide a durable yet secure non-marking surface to grip the roll. The 16” (41 cm) high clamping pads are ideal for clamping more sensitive roll materials, as they spread the clamping force over a larger surface area, helping to minimize excessive distorting or impressions to more fragile roll materials. RCR clamps can handle a wide range of roll materials from 31” (78.7 cm) to 48” (121.9 cm) in diameter and weighing up to 600 lbs. (272.2 kgs), contingent on equipment configuration. To load rolls to and from converting equipment these clamps can rotate 360° endlessly either left or right. A small roll adapter is also available which reduces the clamping range diameter by 5” (13 cm). For handling shorter width rolls 8” (20.3 cm) high clamping pads are also available.

ER DC Models with RCR 3148-16 clamp



RCR3148-16 close-up



ER straddle leg model
w/ RCR3148-16 clamp



RCR3148-16 clamp
with a roll

ROLL MANIPULATORS (ER) - RCR CLAMP OPTIONS

SMALL ROLL ADAPTER (for RCR-Style clamps) which reduces the clamping range diameter by 5" (13 cm). Each small roll adapter consists of one individual curved section with white non-marking rubber vulcanized to the metal curve. The adapter is then slid through or around the clamp back pad then locked into place by inserting two stainless-steel retaining pins & circle cotter pins on a lanyard. Available in safety orange powder coating, FDA compliant metallic gray powder coating or stainless-steel construction.

**RCR1324-16
without adapter**



**RCR1324-16 w/ adapter
reduces the clamping
range to 8" (20 cm) to 19"
(48 cm) in diameter**



**RCR1626-16
with FDA compliant
powder coating
without adapter**



**RCR1626-16
With FDA compliant
powder coating
w/ adapter reduces
the clamping range to
11" (28 cm) to
21" (53 cm) in
diameter**



**RCR2336-16
without adapter**



**RCR2336-16
w/ adapter reduces
the clamping range
to 18" (46 cm) to
31" (79 cm) in
diameter**



**EASY LIFT EQUIPMENT, INC. IS AN
ISO 9001: 2015 CERTIFIED COMPANY**



ISO 9001: 2015 Certified Company

Easy Lift Equipment, Inc.
2 Mill Park Ct.
Newark, DE. 19713

800-233-1800
or 302-737-7000
Fax: 302-737-7333
Email: sales@easylifteqpt.com
Website: www.easylifteqpt.com



**Most Roll Manipulators are available on a 30-day trial toward purchase for first time buyers.
The cost of the 30-day trial is 15% of the retail purchase price with options.**

ROLL MANIPULATORS (ER) WITH SRCR CLAMP

ROLL MANIPULATORS (ER) WITH AN SRCR CLAMP – The SRCR clamp is designed for handling a roll from 12” (30 cm) to 26” (66 cm) in diameter and weighing up to 1,200 lbs. (544 kg), contingent on equipment configuration. The larger hydraulic clamping arm is equipped with two position settings, which allows the clamp to handle this wide range of roll diameters. The most valuable feature of this clamp is its ability to grip and handle rolls from either a vertical or horizontal position. This feature is possible due to the SRCR clamp having a lower fixed arm and an upper hydraulic clamping arm. The lower arm acts as a scoop, allowing the clamp to get a clamping pad underneath a horizontal roll. The hydraulic arm then clamps down securing the roll for rotation or transport. This clamp comes standard with 16” high (40.6 cm) clamping pads but is also available with optional 8” high (20.3 cm) clamping pads. Both clamping pads are lined with SBR rubber to provide a durable yet secure non-marking surface to grip the roll. This clamp rotates 360° endlessly, either left or right at a controlled speed, which enables accuracy when rotating a roll from vertical to horizontal positioning, or vice-versa. The larger hydraulic clamping arm is equipped with two position settings: The inner pin position handles 12” (30 cm) to 22” (56 cm) diameter rolls, while the outer pin position handles 18” (46 cm) to 26” (66 cm) diameter rolls.

ER DC powered models with SRCR clamp



ER straddle leg model w/ SRCR clamp



ER counterbalance model w/ SRCR clamp



SRCR inner pin position
clamping range
12” (30 cm) to 22” (56 cm)
in diameter



SRCR outer pin position
clamping range
18” (46 cm) to 26” (66 cm) in
diameter



SRCR clamp
picking or placing
a horizontal roll



SRCR clamp
picking or placing
a vertical roll

ROLL MANIPULATORS (ER) WITH LRCR CLAMP

ROLL MANIPULATORS (ER) WITH AN LRCR CLAMP – The LRCR clamp is designed for handling a roll from 20” (51 cm) to 40” (102 cm) in diameter and weighing up to 1,000 lbs. (454 kg), contingent on equipment configuration. The lower fixed arm has two position settings, which allows the clamp to handle this wide range of roll diameters. The most valuable feature of this clamp is its ability to grip and handle rolls from either a vertical or horizontal position. This feature is possible due to the LRCR clamp having a lower fixed arm and an upper hydraulic clamping arm. The lower arm acts as a scoop, allowing the clamp to get a clamping pad underneath a horizontal roll. The hydraulic arm then clamps down securing the roll for rotation or transport. This clamp comes standard with 16” high (40.6 cm) clamping pads but is also available with optional 8” high (20.3 cm) clamping pads. Both clamping pads are lined with SBR rubber to provide a durable yet secure non-marking surface to grip the roll. This clamp rotates 360° endlessly, either left or right at a controlled speed, which enables accuracy when rotating a roll from vertical to horizontal positioning, or vice-versa. The larger hydraulic clamping arm is equipped with two position settings: The inner position handles 20” (51 cm) to 36” (92 cm) diameter rolls, while the outer position handles 24” (61 cm) to 40” (102 cm) diameter rolls.

ER DC powered models with LRCR clamp



ER straddle leg model w/ LRCR clamp



ER straddle leg FDA model w/ LRCR clamp



LRCR inner position
clamping range
20” (51 cm) to 36” (91 cm)
in diameter



LRCR outer position
clamping range
24” (61 cm) to 40” (102 cm)
in diameter.



LRCR clamp
picking or placing a
horizontal roll



LRCR clamp
picking or placing a
vertical roll

ROLL MANIPULATORS (ER) – ADDITIONAL OPTIONS

ADJUSTABLE CLAMPING PRESSURE allows operators to adjust the factory set clamping pressure exerted on the roll, depending on clamp and application, such as handling sensitive rolls materials subject to impressions.

**Side-rotation
adjustable clamping pressure**



**Forward-rotation
adjustable clamping pressure**



**Side-rotation clamp w/ side
shifter & adjustable clamping
pressure**



SIDE SHIFTER, (for CR, RCR-style, LRCR, and SRCR clamps) which provides the clamp with 4" (10 cm) of travel to the left & the right of the center position. This enables the operator to side shift the clamp to the left or right, which can be a useful tool when trying to dispense material into small reactor openings. Side shifters are only available on single stage mast units with side rotation clamps.

Side shift right



Center position



Side shift left



**Most Roll Manipulators are available on a 30-day trial toward purchase for first time buyers.
The cost of the 30-day trial is 15% of the retail purchase price with options.**

ROLL MANIPULATORS (ER) – ADDITIONAL OPTIONS (CONT.)

ANTI-DRIFT BRAKE ROTATION MOTOR for suspending unbalanced loads in a rotated position for an extended period.

Side rotation anti-drift brake motor



Forward rotation anti-drift brake motor



HEAVY-DUTY LINE GUARDS became standard starting in 2017 for all side-rotation clamps. This was only an option prior to 2017. Line Guards save on shipping damage, repair costs & down time by protecting hydraulic lines, pumps, reservoirs, and cartridge valves located behind all side-rotating clamps. Line Guards also help reduce cleaning time of the clamp components in food and pharmaceutical applications.



SCALE SYSTEM. Roll Transporters with scales (and an optional printer) provide an efficient and easy method for weighting inventory while eliminating the need to transport product to floor scales for weighing. These indicators are available from multiple manufacturers and can be integrated with existing systems to maintain consistency and minimize training throughout your site.



EXCHANGEABLE BATTERY OPTION

EXCHANGEABLE BATTERY OPTION (without charging stand) includes an external charger (in lieu of an internal charger), two sets of 12-volt AGM batteries, and all the necessary quick disconnects, including inside the DC Box.



EXCHANGEABLE BATTERY OPTION (with charging stand) includes a wall-mounted charging stand (with an external charger already affixed to the stand, in lieu of an internal charger), two sets of 12-volt AGM batteries, and all the necessary quick disconnects, including inside the DC box. The DC charging stand is designed to be wall-mounted but can also be placed directly onto a shelf or other location.



ROLL-HAULERS (RH)

Roll-Haulers make the task of handling roll materials and cylinders, both safe and easy. Roll-Haulers are the most ergonomic units available for these types of applications due to their wide range of configurations, which can be suited to fit your specific needs. Roll-Haulers are designed to work in tightly confined production areas and are completely counterbalanced, requiring no outriggers for stability, and are ideal for traveling over long distances. Most models, excluding forward rotation models, are designed to fit through a standard 30" (76 cm) wide x 84" (213 cm) high doorway. The large industrial battery provides enough power to run continuously for up to 16 hours on a single charge.

STANDARD FEATURES AND SPECIFICATIONS INCLUDED ON ALL MODELS LISTED IN THIS BROCHURE:

Finish: Equipment comes standard with safety orange powder coating for durability.

Drive Control: High-performance 3-phase AC drive motor.

Speed Control: Electronic Speed Controller with variable forward and reverse speeds.

Braking: Electro-mechanical disc which locks when the tiller handle is in a fully upright or lowered position and requires the tiller handle to be actively engaged to travel.

Handle Controls: Dual thumb operated tiller handle provides superior control of forward and reverse direction. Depressing the reversing safety collision bumper on the tiller handle, when the equipment is traveling in reverse direction, will automatically stop and move the unit forward to help prevent injury. The tiller handle also contains lift and lower controls contained on both the top and bottom sides of the tiller handle, a horn button, and a turtle switch, which allows the Roll-Hauler to be moved while the tiller handle is in a fully upright position, as well as offer a creep function for precise positioning.

Key Switch Display Assembly: Features a 2-inch display which includes a battery discharge indicator, hour-meter, and trouble code display. The Key on/off and red emergency stop switches are also included, which disable all functions when the key is in the off position, or removed, or when the red emergency switch in the engaged (pressed down) position.

Battery: DEKA 12-D85-9 wet cell, 24-volt, 340 amp-hour industrial battery with SB-175 connector.

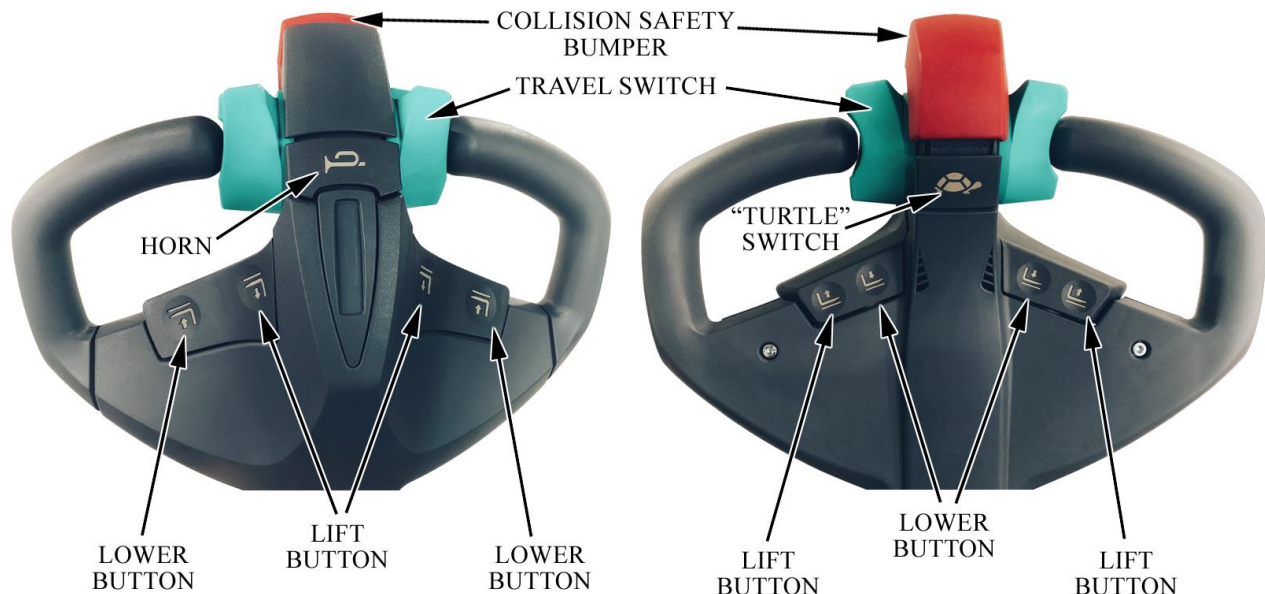
Lift Cylinder: Provided with a hydraulic velocity fuse and adjustable flow control valve to regulate lowering speed.

Wheels: 3" diameter x 4" wide articulating tandem polyurethane load wheels, 9" diameter x 2.75" wide rubber or polyurethane drive wheel, and 4" diameter x 1" wide stability casters on both sides to eliminate any side-to-side tilting.

ROLL-HAULER TILLER HANDLE

TOP VIEW OF TILLER HANDLE

BOTTOM VIEW OF TILLER HANDLE



ROLL-HAULER 2-INCH DISPLAY, KEY SWITCH AND RED EMERGENCY SWITCH

The equipment Drive Frame contains a **2-inch display**, which includes: the battery charge status, drive hours, travel speed profiles and error codes / event messages.

A **key switch**, which disables the unit when the key is in the “OFF” position. Removing the key prevents unauthorized use of the equipment.

A **red emergency switch** is also included, which immediately de-energizes the unit when the button is pressed down. The button is then rotated clockwise to re-energize the unit.



ROLL-HAULER BASE FRAMES FROM 41.75” (106 cm) TO 54” (137 cm) IN LENGTH

SHORTENED BASE FRAME LENGTHS:

For Rotating Clamp Roll-Haulers shortened base frames of 41.75” (106 cm) or 46.5” (118 cm) are available for narrow or tight applications (which reduces capacity).

41.75” Base Frame



46.5” Base Frame



54” Base Frame



BATTERY OPTIONS



Wet Cell Industrial Batteries for Non-“EE” or “EE” environments

Roll-Haulers come standard with a Deka Industrial D-Series Wet Cell Battery, which provides 340 A.H. of dependable power. All Deka Batteries pass through more than 250 quality control checks to assure consistent quality every time and are designed and manufactured with the finest materials under strict computer control.

- Deka 12-D85-9 Wet Cell, 24Volt, 340 A.H. industrial battery
- Deka 12-D85-9-EE Wet Cell, 24Volt, 340 A.H. industrial battery

Gel Cell Industrial Batteries for Non-“EE” or “EE” environments

These Valve-Regulated Gel electrolyte batteries are designed to provide 300 A.H. of reliable, maintenance-free power. The gelled electrolytes protect the battery plates making it ideal for renewable energy deep cycle applications.

- Deka 12-G75-9 Gel Cell, 24Volt, 300 A.H. industrial battery
- Deka 12-G75-9-EE Gel Cell, 24Volt, 300 A.H. industrial battery



Thin Plate Pure Lead Batteries for Non-“EE” or “EE” environments

Featuring proprietary Thin Plate Pure Lead (TPPL) technology, NexSys® batteries provide an advanced, cost-effective 274 A.H. power solution. NexSys batteries offer faster, more flexible charging – opportunity charge anytime the vehicle is stopped, during breaks or at the end of a shift. The virtually maintenance-free power solution never requires watering, battery washing or long equalize charges, is resistant to shock and vibration and with very low internal resistance, provides more power when you need it most.

- 24v, 274 A.H. NexSys Pure TPPL Maintenance Free Ind. Battery w/ on-board Charger
- 24v, 274 A.H. NexSys Pure TPPL Maintenance Free Ind. EE Battery w/ on-board Charger

CHARGING THE EQUIPMENT

The optional **MAC Charger** is a dual voltage AC charger for Wet Cell Batteries. The charger is provided with both 110- and 220-volt connectors. The operator must select the appropriate connector, and ensure the charger is set to the correct voltage via the selector switch on the face of the charger.



REMOTE-CONTROL BOX FUNCTIONS FOR ROTATING ROLL-HAULERS

Remote-Control Box Functions for Rotating Roll-Haulers

All rotating clamp models include a magnetic backed control box on a coil cord, which provides remote rotation & clamping functions. This allows the operator to control the clamp functions from various remote positions around the machine. The control box houses the switches for clamping, unclamping, 360° endless side-rotation (on SR, CR & RCR-style models) or 180° forward rotation (on FSR & FCR models). An optional side shifter function is also available for side-rotation models. The size of the control box is dependent on the number of functions, as shown below. Clamping and side shifter switches also include a red safety switch to control these functions. This requires the operator to activate two switches when clamping, unclamping, or side shifting. This helps to prevent the accidental release of an elevated load. Control boxes are NOT provided on Roll-Haulers equipped with roll posts or non-rotating forks.

**Roll-Hauler
Standard Remote-Control Boxes**

**The Remote-Control Box at
the end of the coiled cord**



ROTATING ROLL-HAULERS (RH) – FEATURES & OPTIONS

ROTATING ROLL-HAULERS (RH), feature an RCR 1324, RCR 1626, RCR 2336, RCR 3148, SRCR or LRCR clamp designed to handle a wide range of roll materials.

Standard features include:

- Self-propelled unit with DC powered travel, clamp, lift, and rotation
- 800 lb. (363 kg) weight capacity (excluding RCR 3148 which has a 600 lb. (270 kg) max. capacity)
- Single stage mast to provide approximately 60” (152 cm) of lift from floor to center of the core (contingent on equipment configuration)
- Narrow profile mast design gives operators great forward visibility while gripping, lifting, transporting, or rotating a roll
- 16” (41 cm) high clamping pads lined with white non-marking rubber to securely grip a wide range of rolls. 8” (20 cm) high clamping pads are also available for these clamps for handling shorter width rolls
- A magnetic backed control box on a coil cord provides remote rotation and clamping functions
- Deka 12-D85-9 Wet Cell, 24 Volt, 340 A.H industrial battery
- Transport rolls up and down ramps or sloped surfaces
- Grip rolls ranging from 12” (33 cm) to 48” (102 cm) in diameter (contingent on equipment clamp)
- Rotate rolls 360° endlessly, either left or right
- A narrow 28.5” (72 cm) overall width and 54” (137 cm) length base frame

Popular options for all Rotating Roll-Haulers include:

- Scale systems: For intrinsically or non-intrinsically safe areas for weighing rolls or performing inventory
- Adjustable clamping pressure: Adjusts the factory set clamping pressure exerted on the roll
- RCR small roll adapter for reducing the clamping range by 5” (13 cm)
- 8” (20 cm) high clamping pads for narrow width rolls
- FDA compliant metallic gray powder coating for food and pharmaceutical applications
- Shortened base frame of 46.5” (118 cm) or 41.75” (106 cm) for narrow or tight applications (which reduces capacity)
- Increased lift heights of up to 96” (244 cm) from floor to center of the core (contingent on equipment configuration)
- Increased roll weight capacity of up to 1,000 lbs. (454 kg)
 - Available for **RCR 2336, SRCR & LRCR** Clamps with a Single Stage Mast only
- Increased roll weight capacity of up to 1,200 lbs. (544 kg)
 - Available for **RCR 1324 & RCR 1626** Clamps with a Single Stage Mast only
- Elevated base frames for traveling over berms
- Gel Cell or NexSys Pure for a maintenance free battery
- Battery roll out tray with conveyor and stand to support 2 batteries for three shift facilities
- Intertek Approved "EE" rating for hazardous areas (includes electrically enclosed drive controller, grounding strap, and “EE” rated battery)



Most Roll-Haulers are available on a 30-day trial toward purchase for first time buyers. The cost of the 30-day trial is 15% of the retail purchase price with options.

ROLL-HAULERS (RH) WITH RCR CLAMPS

ROLL-HAULER (RH) WITH AN RCR 1324-16 CLAMP (FOR HANDLING ROLLS) is designed for handling rolls from 13" (33 cm) to 24" (61 cm) in diameter and weighing up to 1,200 lbs. (544 kg). The 16" (40.6 cm) high clamping pads are ideal for clamping more sensitive rolls, as the taller pads spread the clamping force over a larger surface area, thus helping to minimize damage or impressions to the roll material. Optional factory installed 8" (20 cm) high clamping pads are also available at the time of order. The clamp design features a stationary back pad and two clamping arms with fixed clamping pads. All three clamping pads are lined with SBR rubber to provide a durable yet secure non-marking surface to grip the roll. This clamp rotates 360° endlessly, either left or right, at a controlled speed which enables accuracy when rotating a roll from vertical to horizontal positioning, or vice-versa.

RCR 1324-16 clamp additional popular options include:

- A small roll adapter, which reduces the clamping range diameter to 8" (20 cm) to 19" (48 cm)
- Factory installed 8" (20 cm) high clamping pads are also available at time of order for applications with shorter width rolls
- Extended reach, for up to 24" (61 cm) of additional reach
- Anti-Drift Motor Brake for suspending an unbalanced load in a rotated position for an extended period
- Side Shifter, which provides the clamp with 4" (10 cm) of travel to the left & the right of the center position

RCR 1324 clamp for a 13" to 24" diameter roll with 16" high fixed clamping pads - Up to 1,200 lb. capacity



**RCR1324-16
open position**

**RCR1324-16
closed position**

**RCR1324-16 with adapter
reduces the clamping range to
8" (20 cm) to 19" (48 cm) in diameter**



ROLL-HAULERS (RH) WITH RCR CLAMPS (CONT.)

ROLL-HAULER (RH) WITH AN RCR 1626-16 CLAMP (FOR HANDLING ROLLS) is designed for handling rolls from 16" (41 cm) to 26" (66 cm) in diameter and weighing up to 1,200 lbs. (544 kg). The 16" (40.6 cm) high clamping pads are ideal for clamping more sensitive rolls, as the taller pads spread the clamping force over a larger surface area, thus helping to minimize damage or impressions to the roll material. Optional factory installed 8" (20 cm) high clamping pads are also available at the time of order. The clamp design features a stationary back pad and two clamping arms with flexible clamping pads. All three clamping pads are lined with SBR rubber to provide a durable yet secure non-marking surface to grip the roll. This clamp rotates 360 degrees endlessly, either left or right, at a controlled speed which enables accuracy when rotating a roll from vertical to horizontal positioning, or vice-versa.

RCR 1626-16 clamp additional popular options include:

- A small roll adapter, which reduces the clamping range diameter to 11" (28 cm) to 21" (53 cm)
- 8" (20 cm) high clamping pads are also available for applications with shorter width rolls
- Extended reach, for up to 24" (61 cm) of additional reach
- Anti-Drift Motor Brake for suspending an unbalanced load in a rotated position for an extended period
- Side Shifter, which provides the clamp with 4" (10 cm) of travel to the left & the right of the center position

RCR 1626 clamp for a 16" to 26" diameter roll with 16" high flexible clamping pads - Up to 1,200 lb. capacity



**RCR1626-16
with FDA metallic gray powder
coating in
open position**



**RCR1626-16
with FDA metallic gray powder
coating in
closed position**



**RCR1626-16 with Adapter
Reduces the clamping range to
11" (28 cm) to 21" (53 cm) in
diameter**



ROLL-HAULERS (RH) WITH RCR CLAMPS (CONT.)

ROLL-HAULER (RH) WITH AN RCR 2336-16 CLAMP is designed for handling rolls from 23" (58 cm) to 36" (91 cm) in diameter and weighing up to 1,000 lbs. (454 kg). The 16" (40.6 cm) high clamping pads are ideal for clamping more sensitive rolls, as the taller pads spread the clamping force over a larger surface area, thus helping to minimize damage or impressions to the roll material. Optional factory installed 8" (20 cm) high clamping pads are also available at the time of order. The clamp design features a stationary back pad and two clamping arms with flexible clamping pads. All three clamping pads are lined with SBR rubber to provide a durable yet secure non-marking surface to grip the roll. This clamp rotates 360° endlessly, either left or right, at a controlled speed which enables accuracy when rotating a roll from vertical to horizontal positioning, or vice-versa.

RCR 2336-16 clamp additional popular options include:

- A small roll adapter, which reduces the clamping range diameter to 18" (46 cm) to 31" (79 cm)
- 8" (20 cm) high clamping pads are also available for applications with shorter width rolls
- Anti-Drift Motor Brake for suspending an unbalanced load in a rotated position for an extended period
- Side Shifter, which provides the clamp with 4" (10 cm) of travel to the left & the right of the center position

RCR 2336 clamp for a 23" to 36" diameter roll w/ 16" high flexible clamping pads - Up to 1,000 lb. capacity



**RCR2336-16
open position**

**RCR2336-16
closed position**

**RCR2336-16 with adapter
reduces the clamping range to
18" (46 cm) to 31" (79 cm) in diameter**



ROLL-HAULERS (RH) WITH RCR CLAMPS (CONT.)

ROLL-HAULER (RH) WITH AN RCR 3148-16 CLAMP is designed for handling rolls from 31" (79 cm) to 48" (122 cm) in diameter and weighing up to 600 lbs. (272 kg). The 16" (40.6 cm) high clamping pads are ideal for clamping more sensitive rolls, as the taller pads spread the clamping force over a larger surface area, thus helping to minimize damage or impressions to the roll material. Optional factory installed 8" (20 cm) high clamping pads are also available at the time of order. The clamp design features a stationary back pad and two clamping arms with flexible clamping pads. All three clamping pads are lined with SBR rubber to provide a durable yet secure non-marking surface to grip the roll. This clamp rotates 360° endlessly, either left or right, at a controlled speed which enables accuracy when rotating a roll from vertical to horizontal positioning, or vice-versa.

RCR 3148-16 clamp additional popular options include:

- A small roll adapter, which reduces the clamping range diameter to 26" (66 cm) to 43" (109 cm)
- 8" (20 cm) high clamping pads are also available for applications with shorter width rolls
- Anti-Drift Motor Brake for suspending an unbalanced load in a rotated position for an extended period
- Side Shifter, which provides the clamp with 4" (10 cm) of travel to the left & the right of the center position

RCR 3148 clamp for a 31" to 48" diameter roll with 16" high flexible clamping pads - Up to 600 lb. capacity



**Side rotation
anti-drift brake motor**

**RCR3148-16
closed position**



ROLL-HAULER (RH) WITH SRCR CLAMP

ROLL-HAULER (RH) WITH AN SRCR CLAMP is designed for handling rolls from 12" (30 cm) to 26" (66 cm) in diameter and weighing up to 1,200 lbs. (544 kg). The larger hydraulic clamping arm is equipped with two position settings, which allows the clamp to handle this wide range of roll diameters. The most valuable feature of this clamp is its ability to grip and handle rolls from either a vertical or horizontal orientation. This feature is possible due to the SRCR clamp having a lower fixed arm and an upper hydraulic clamping arm. The lower arm acts as a scoop, allowing the clamp to get a clamping pad underneath a horizontal roll. The hydraulic arm then clamps down securing the roll for rotation or transport. The standard 16" (40.6 cm) high clamping pads are ideal for clamping more sensitive rolls, as the taller pads spread the clamping force over a larger surface area, thus helping to minimize damage or impressions to the roll material. Optional factory installed 8" (20 cm) high clamping pads are also available at the time of order. Both clamping pads are lined with SBR rubber to provide a durable yet secure non-marking surface to grip the roll. This clamp rotates 360° endlessly, either left or right, at a controlled speed which enables accuracy when rotating a roll from vertical to horizontal positioning, or vice-versa. The larger hydraulic clamping arm is equipped with two position settings: The inner pin position handles 12" (30 cm) to 22" (56 cm) diameter rolls, while the outer pin position handles 18" (46 cm) to 26" (66 cm) diameter rolls.

SRCR clamp additional popular options include:

- Anti-Drift Motor Brake for suspending an unbalanced load in a rotated position for an extended period
- 8" (20 cm) high clamping pads are also available for applications with shorter width rolls
- Side Shifter, which provides the clamp with 4" (10 cm) of travel to the left & the right of the center position

SRCR 1226 clamp for a 12" to 26" diameter roll with 16" high flexible clamping pads - Up to 1,000 lb. capacity



**SRCR inner pin position
clamping range
12" (30 cm) to 22" (56 cm) in dia.**

**SRCR outer pin position
clamping range
18" (46 cm) to 26" (66 cm) in dia.**

**SRCR clamp
picking or placing
a horizontal roll**

**SRCR clamp
picking or placing
a vertical roll**



ROLL-HAULER (RH) WITH LRCR CLAMP

ROLL-HAULER (RH) WITH AN LRCR CLAMP is designed for handling rolls from 20" (51 cm) to 40" (102 cm) in diameter and weighing up to 1,000 lbs. (454 kg). The lower fixed arm has two position settings, which allows the clamp to handle this wide range of roll diameters. The most valuable feature of this clamp is its ability to grip and handle rolls from either a vertical or horizontal orientation. This feature is possible due to the LRCR clamp having a lower fixed arm and an upper hydraulic clamping arm. The lower arm acts as a scoop, allowing the clamp to get a clamping pad underneath a horizontal roll. The hydraulic arm then clamps down securing the roll for rotation or transport. The standard 16" (40.6 cm) high clamping pads are ideal for clamping more sensitive rolls, as the taller pads spread the clamping force over a larger surface area, thus helping to minimize damage or impressions to the roll material. Optional factory installed 8" (20 cm) high clamping pads are also available at the time of order. Both clamping pads are lined with SBR rubber to provide a durable yet secure non-marking surface to grip the roll. This clamp rotates 360 degrees endlessly, either left or right at a controlled speed, which enables accuracy when rotating a roll from vertical to horizontal positioning, or vice-versa. The larger hydraulic clamping arm is equipped with two position settings: The inner position handles 20" (51 cm) to 36" (92 cm) diameter rolls, while the outer position handles 24" (61 cm) to 40" (102 cm) diameter rolls.

LRCR clamp additional popular options include:

- Anti-Drift Motor Brake for suspending an unbalanced load in a rotated position for an extended period
- 8" (20 cm) high clamping pads are also available for applications with shorter width rolls
- Side Shifter, which provides the clamp with 4" (10 cm) of travel to the left & the right of the center position

LRCR 2040 clamp for a 20" to 40" diameter roll with 16" high flexible clamping pads - Up to 1,000 lb. capacity



**LRCR inner position
clamping range
20" (51 cm) to
36" (91 cm) in diameter**

**LRCR outer position
clamping range
24" (61 cm) to 40" (102 cm)
in diameter.**

**LRCR clamp picking or
placing a
horizontal roll**

**LRCR clamp
picking or placing
a vertical roll**



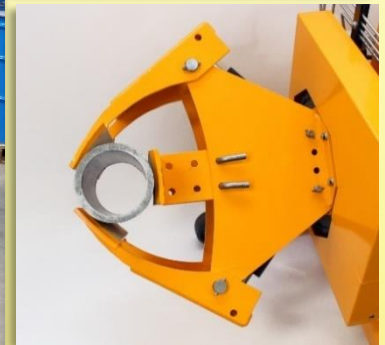
CYLINDER HANDLING WITH CCR CLAMP

CYLINDER CLAMP ROTATORS (CCR) are the safe and ergonomic solution for clamping, rotating, and transporting cylinders from 5" (13 cm) to 13" (33 cm) in diameter, depending on back pad positioning. The CCR Clamp offers 360° endless side rotation, either left or right, and is available with either 8" (20 cm) or 16" (41 cm) clamping pads. The back pad offers three settings for a range of cylinder diameters.

CCR Clamp additional popular options include:

- Extended reach, for up to 24" (61 cm) of additional reach
- An anti-drift brake rotation motor

CCR 513 clamp for a 5" to 13" diameter drum w/ 8" or 16" high fixed clamping pads - Up to 1,000 lb. capacity



Back pad setting 1:
Clamping range diameter
8" (20 cm) to 13" (33 cm)

Back pad setting 2:
Clamping range diameter
6" (15 cm) to 11" (28 cm)

Back pad setting 3:
Clamping range diameter
5" (13 cm) to 7" (18 cm)



ROLL-HAULER (RH) ADDITIONAL OPTIONS

ADJUSTABLE CLAMPING PRESSURE

which allows operators to adjust the factory set clamping pressure exerted on the roll, depending on clamp and application, such as handling sensitive rolls materials subject to impressions.

Side-rotation adjustable clamping pressure



Forward-rotation adjustable clamping pressure



Side-rotation clamp w/ side shifter & adjustable clamping pressure



SIDE SHIFTER, (for CR, RCR-style, LRCR, and SRCR Clamps) which provides the clamp with 4" (10 cm) of travel to the left & the right of the center position. This enables the operator to side shift the clamp to the left or right, which can be a useful tool when trying to dispense material into small reactor openings. Side shifters are only available on single stage mast units with side rotation clamps.

Side shift right

Center position

Side shift left



SCALES for weighing a roll or performing inventory are available for many models seen in this brochure. Scales are extremely accurate and eliminate the need for floor scales. Scales are available from several indicator manufacturers for intrinsically safe or non-intrinsically safe areas. Contact us for more details!

Non-intrinsically safe scales

Doran 7000XL



Rice Lake 680



Intrinsically safe scales

Rice Lake 882IS



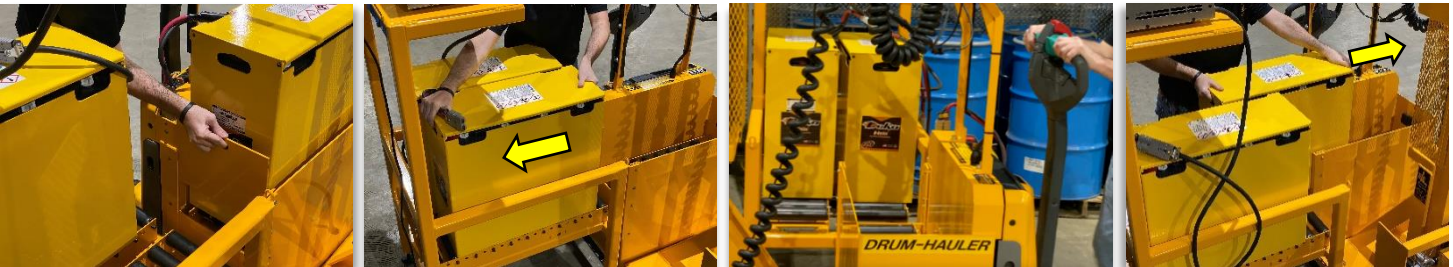
Mettler Toledo 256x



BATTERY ROLL-OUT TRAY & CHARGING STATION

BATTERY ROLL-OUT TRAY & CHARGING STAND Roll-Haulers can run continuously for up to 16 hours before recharging of the battery is required. For 3-shift operations, an optional battery roll-out tray and charging station is available. The battery stand, which is built according to the unit's battery height, contains two short conveyors which are designed to hold one additional battery and provide the ability to quickly change a low powered battery with a fully charged one. This prevents downtime and increases productivity. An extension cable is also provided with the battery stand to assist in the battery changing process. The shelf of the Battery Stand conveniently supports the battery charger (sold separately). An additional battery must be ordered separately which charges on the stand while the Roll-Hauler operates with the other battery. Battery heights may vary depending on the unit's base frame height & rated capacity.

Battery stand w/ extension cable. (Charger sold separately)



The Battery Roll-Out Tray on the Drum- or Roll-Hauler includes a **removable door with a conveyor**, which is set to the same height as the Battery Stand.



RH4000 & RH6000 SELF-POWERED ROLL TRANSPORTERS

RH4000 & RH6000 are designed for lifting and transporting large rolls weighing up to 4,000 lb. (1815 kg) or 6,000 lb. (2722 kg) respectively. The lifting forks are equipped with fixed, cushioned roll supports to protect the surface of the roll when lifted. The support cushions are designed to lift a large diameter roll several inches above the floor for safe and easy transport. The length of the roll supports can be 36" (91 cm), 48" (122 cm), or 60" (152 cm) depending on the customers' requirements. An adjustable position stabilization bar is provided to help increase safety when transporting narrow width rolls or coils. All models have the same standard features of other Roll- Haulers but use a slightly smaller Deka 12-D85-7 24v, 255 A.H. Deka Industrial Wet Cell Battery.



SELF-PROPELLED STRADDLE STACKERS (ERP)

ERP SELF-PROPELLED STRADDLE STACKERS – ERP models are equipped with custom roll handling attachments to fit your specific application. **ROLL FORKS (RF)** lift rolls with cushioned rubber pads, whereas **ROLL ARMS (RA)** are designed to support a mandrel through a rolls core. **HYDRAULIC LIFT SHOVELS (S50)** lower to the floor or a pallet for easy placement and transportation of large diameter rolls, up to 50” (127 cm) diameters. Straddle leg widths and lengths are specific to each application. The long, low mounted handle promotes lower steering resistance while also keeping the operator a safe and comfortable distance from the truck. The proportional lowering function ensures rolls are precisely placed on converting machines or gently on the floor. The truck’s compact design enables the ERP to operate in confined spaces. All travel, lift and horn functions are easily accessible from both sides of the multi-function handle. The green butterfly control provides excellent forward and reverse speeds. A “turtle switch” is also included, which allows the ERP to be moved while the tiller handle is in a fully upright position, as well as offers a creep function for precise positioning. The ERP offers several features which ensure excellent power management and longer operating times. The maintenance-free 2x12V, 70 Ah battery pack is easily recharged with the integrated charger, which can be connected to any 110/120V wall outlet. The battery discharge indicator continuously displays battery state-of-charge and includes a lift cut-out function when state-of-charge drops to 20%. An innovative 3-phase AC drive motor is virtually maintenance-free and provides outstanding performance for efficient, productive operation.

ERP WITH ROLL FORKS (RF) are carriage mounted and designed to lift a roll weighing up to 2,000 lbs. (907.2 kg). Roll Fork lengths and straddle leg specifications are designed to meet the specific needs of a customer’s roll handling application. Contact Easy Lift Equipment for more details.



ERP WITH ROLL ARMS (RA) are carriage mounted and fixed. They are designed to lift a roll weighing up to 2,000 lbs. (907.2 kg). Roll Arm lengths and straddle leg specifications are designed to meet the specific needs of a customer’s roll handling application.



SELF-PROPELLED STRADDLE STACKERS (ERP) (CONT.)

ERP WITH HYDRAULIC LIFT SHOVEL (S50) features a 31.5" (80 cm) wide curved platform, which contours to a roll up to 50" (127 cm) in diameter and weighing up to 2,000 lbs. (907 kg.). The hydraulic lift lowers to the floor or a standard height pallet allowing the large roll to be easily moved to and from the shovel roll-platform by the operator. Once the roll is on the platform, the hydraulic lip is raised, which keeps the roll safely in place. The full shovel assembly raises and lowers to allow the operator to place or remove a large roll to and from converting equipment. Also available with up to a 72" (183 cm) platform -- seen bottom, right.



RH WITH ROLL-POSTS & WALKIE STACKERS

ROLL-HAULERS WITH ROLL-POSTS - Various lengths are available for transporting rolls by the core.

Optional side shifters are helpful in positioning the tapered end of the post through the rolls' core. Available in single or two stage masts in capacities of up to 1,500 lb. (680 kg), depending on the length of the roll-post.



COUNTER-BALANCED WALKIE STACKERS - Haulers with forks, better known as Counter-Balanced

Walkie Stackers are available in weight capacities up to 1,200 lb. (540 kg) (contingent on equipment configuration) with single or two-stage masts. Forks can be adjustable or fixed and can be installed on side-shifters or rotators. For custom applications, forks can be attached to rotators or clamp rotators.



ROLL CLAMP ROTATOR ATTACHMENTS

Easy Lift Equipment's Roll Clamp Rotator (**RCR20-40 & RCR30-50**) Attachments are completely self-contained lift truck attachments that can be quickly mounted or unmounted to any ITA Class II Carriage on a lift truck or walkie stacker. These attachments offer a flexible solution to large roll handling applications without having to fully dedicate a lift truck to handling rolls. These attachments include self-contained power and do not require hydraulic or electrical connections to the lift truck or walkie stacker. The clamp rotates 360° endlessly either left or right and is designed to pick or place rolls in either a vertical or horizontal orientation with weight capacities of up to 2,000 lbs. (907 kg), contingent on equipment configuration. Quick and simple mounting and unmounting of the attachment requires only a few bolts, depending on the lift truck or walkie stacker carriage being mounted to. The SBR rubber on the clamping jaws provides a durable yet secure, non-marking surface to grip a roll. The clamping pressure exerted on the roll's surface is adjustable by the operator if handling more sensitive roll materials, by utilizing the adjustable clamping pressure within the DC box. The rotation motor includes a hydraulic brake to prevent drifting of a clamped roll.

The **REMOTE-CONTROL BOX** on a coil cord features both clamp and rotate functions, which allows the operator to safely clamp and rotate a roll from the safety of the lift truck cab or from behind a walkie stacker. The remote-control box is magnetically backed allowing it to be quickly mounted and removed when not in use. The clamping function includes a red safety switch, which is required to be pressed when clamping or unclamping a roll. The red safety switch is designed to help prevent the accidental release of an elevated load.

The remote-control box mounted magnetically on a walkie stacker



The remote-control box mounted magnetically within a lift truck



The **DC BOX** of these Roll Clamp Rotator Attachments include a 12-volt deep cycle maintenance-free battery with internal charger, master disconnect switch, gauge-type battery discharge indicator, and adjustable clamping pressure. A fully charged battery will allow an operator to clamp and rotate a roll 90°, and unclamp the roll approximately 50 times before needing to be recharged. A polarized heavy gauge extension cord rated 12-3 15amp / 125 volt is required to charge the attachment.

Charging the Attachment



RCR20-40 ATTACHMENT

The **RCR20-40 Attachment** is designed for handling a roll from 20" to 40" (50.8 to 101.6 cm) in diameter. This wide range of roll diameters is covered by utilizing two pin positions on the fixed clamping arm. The inner pin position is for roll diameters of 20" to 36" (50.8 to 91.4 cm), whereas the outer pin position is for roll diameters of 24" to 40" (61 to 101.6 cm).

RCR20-40 Attachment shown here on an EMC B10 walkie stacker



RCR30-50 ATTACHMENT

The **RCR30-50 Attachment** is designed for handling a roll from 30" to 50" (76.2 to 127 cm) in diameter. This wide range of roll diameters is covered by utilizing two pin positions on the fixed clamping arm. The inner pin position is for roll diameters of 30" to 46" (76.2 to 116.8 cm), whereas the outer pin position is for roll diameters of 34" to 50" (86.4 to 127 cm).

RCR30-50 Attachment shown here on an EJC 216b walkie stacker

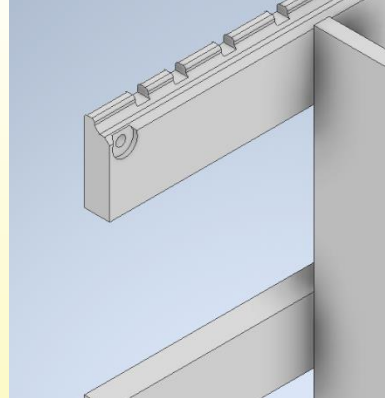
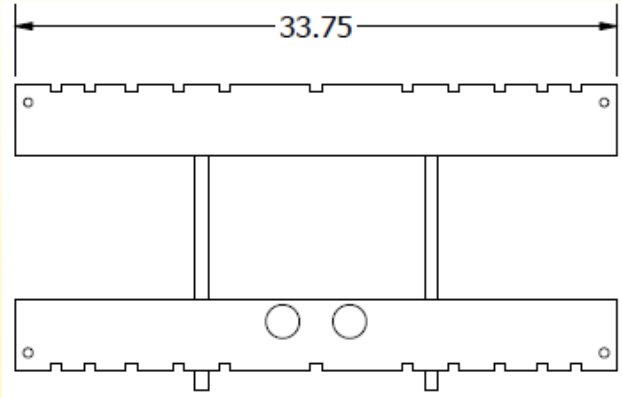


CARRIAGE MOUNTING

RCR-Style Attachments are designed to be mounted to an ITA Class II Carriage. Below are a few examples of basic carriage mounting styles.

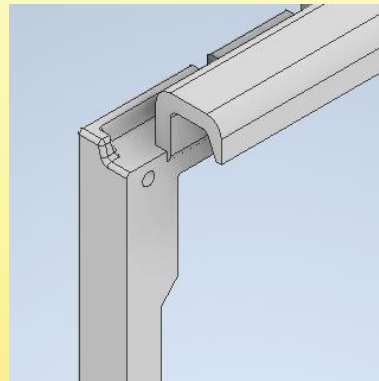
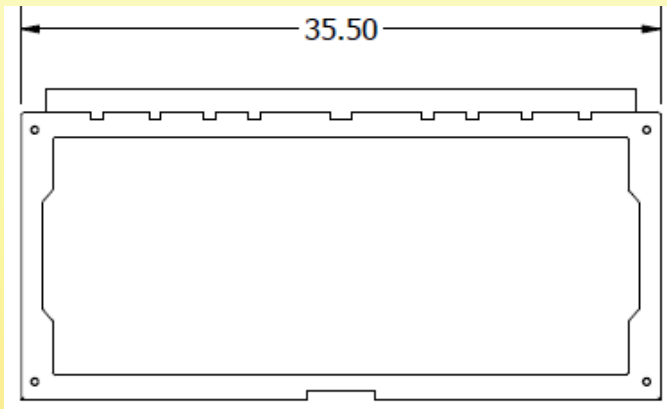
Mounting on 33.75" (85.725 cm) wide ITA Class II straight rail carriages

****Minimum of 33.75" (85.725 cm) carriage width required.****



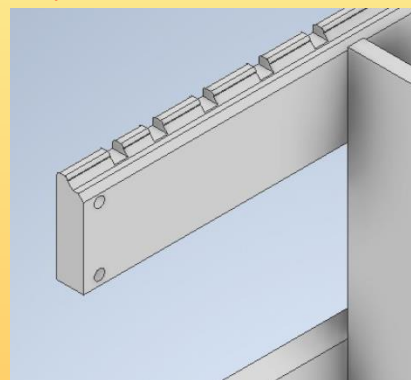
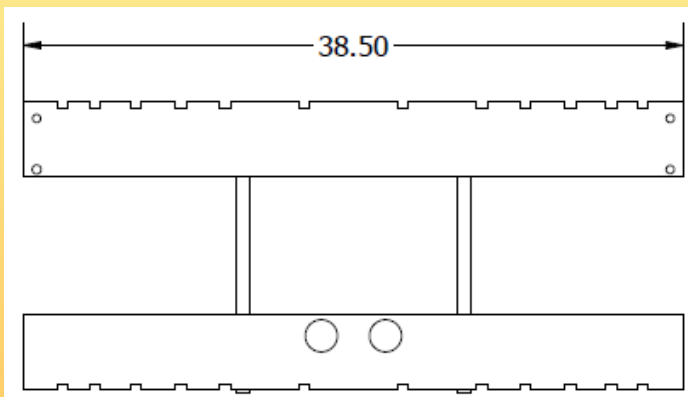
Mounting on 35.50" (90.17cm) wide ITA Class II rounded rail carriages

****Carriage must be greater than 32.25" (82cm) wide.****



Mounting on 38.5" (97.8cm) wide ITA Class II straight rail carriages

****This is standard on most EJC-style drive frames.****



Easy Lift Equipment, Inc.
2 Mill Park Ct.
Newark, DE. 19713
Email: sales@easylifteqpt.com

800-233-1800
or 302-737-7000
Fax: 302-737-7333
www.easylifteqpt.com

CARRIAGE MOUNTING (CONT.)

These RCR-Style Attachments are designed to be unmounted from ITA Class II Carriage by removing 4 to 8 bolts, contingent on what carriage style is being used. Contact Easy Lift Equipment for unmounting instructions for your specific equipment. Once the appropriate bolts have been removed, the attachment can be set directly onto the floor or a pallet using the factory supplied support stand, which is seen below.



**EASY LIFT EQUIPMENT, INC. IS AN
ISO 9001: 2015 CERTIFIED COMPANY**



Easy Lift Equipment, Inc.
2 Mill Park Ct.
Newark, DE. 19713
800-233-1800
or 302-737-7000
Fax: 302-737-7333
Email: sales@easylifteqpt.com
www.easylifteqpt.com



ISO 9001: 2015 Certified Company