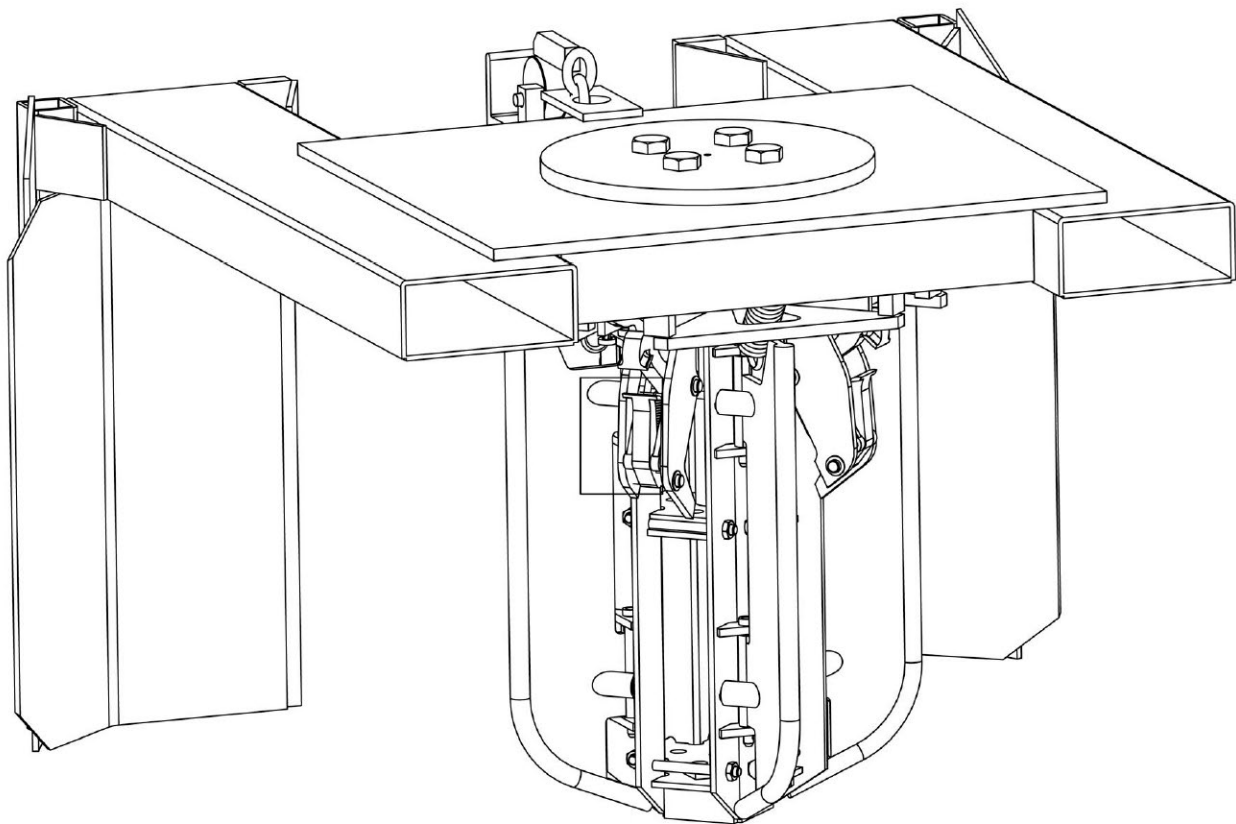


Easy Lift Equipment Co., Inc.

2 Mill Park Court, Newark, Delaware 19713 - Phone: 800-233-1800 / 302-737-7000

EAGLE-GRIP® EL4F SERIES ATTACHMENTS OPERATION & MAINTENANCE INSTRUCTIONS



Easy Lift Equipment Co., Inc.

2 Mill Park Court, Newark, Delaware 19713 - Phone: 800-233-1800 / 302-737-7000

EASY LIFT EQUIPMENT EAGLE-GRIP® EL4F SERIES ATTACHMENTS

INTRODUCTION

The Eagle-Grip® EL4F series of lift truck attachments utilize four automatic clamping mechanisms designed for handling up to four steel or plastic chimed drums weighing up to 1,500 lbs. each. The EL4F is all-mechanical and capable of handling one to four fully loaded drums at a time without the need for hydraulic or electrical connections to the lift truck. It's the ideal attachment for loading or unloading trailers, oversea shipping containers or for palletizing drums from filling lines. All fork mounted models enable lift truck operators to install or remove the attachment within seconds. The fork pockets and safety chain provide a quick and easy connection to any lift truck. The specification plate affixed to each attachment provides the following information: model number, serial number, attachment weight, and lifting capacity. **Please verify with your local forklift dealer that your lift truck, counter-balanced walkie stacker, or walkie straddle stacker is certified and tagged properly for this attachment.**

This manual contains information to help instruct operators on the proper use and maintenance of your Eagle-Grip® EL4F lift truck attachment. This manual should be made available to all operators who will use this equipment. Properly following the maintenance procedures will help ensure a safe and reliable service life. Do not operate this equipment until you have read and understand these instructions.

COMMISSIONING YOUR EAGLE-GRIP® EL4F SERIES ATTACHMENT

1. Perform a visual inspection of the entire unit for damage.
2. Remove all packing materials, protective strapping, and wood shipping blocks. It is recommended to use protective eye gear when cutting any metal strapping. Then, using a company forklift, carefully drive the lift truck and position the forks inside the attachment fork pockets. Then lift and remove the attachment from the shipping pallet.
3. Secure the attachment to the lift truck by connecting the Cam Lock to the forklift's carriage (unless your equipment has the Quick-Claw™ Safety Restraint System). Some models may come with a snap hook safety chain – in those cases the chain is looped around the carriage and the snap hook is connected to the chain to form a loop.
4. The carriage mount version of this attachment will attach directly to any lift truck with an ITA Class II carriage. Lower the lift truck carriage close to the ground. Pull up the locking pin on the top rail of the attachment. Hook the top rail of the attachment over the top rail of the carriage. Slide the attachment so the cleat on the lower rail can pass through the cutout on the lower carriage rail and seat. Slide the attachment to the desired location along the rail. Push the locking pin back down to ensure the attachment is mounted securely to the lift truck carriage.

Easy Lift Equipment Co., Inc.

2 Mill Park Court, Newark, Delaware 19713 - Phone: 800-233-1800 / 302-737-7000

DAILY SAFETY INSPECTION

Do not operate your Eagle-Grip[®] EL4F series attachment if you notice any unsafe condition(s) that may have been caused by an accident or malfunction. Immediately report this condition to your supervisor.

1. Perform a visual inspection, checking for loose or damaged springs and jaws.
2. Ensure that the safety chain cam lock or loop clamp is properly attached to the lift truck carriage.
3. Ensure the operator has read the manual and is properly trained to use the attachment.
4. Observe the condition of the equipment for any other malfunction or defect.

If any of these tests are failed, tag the unit properly to keep it out of service until the problem has been resolved.

SAFETY PRACTICES

1. Do not lift loads that exceed the rated capacity of the unit.
2. During transportation, only lift the drum(s) to the minimum height required for proper floor clearance while transporting the drum(s) to the required destination.
3. Keep hands and feet clear of the clamping head(s), lifting area in front of the unit, and the area underneath an elevated drum.
4. Be certain the clamping head(s) have made a secure connection with the chime of the drum before attempting to move or transport a load.
5. **Do not lift or suspend loads over people. Stay clear of suspended loads.**

Easy Lift Equipment Co., Inc.

2 Mill Park Court, Newark, Delaware 19713 - Phone: 800-233-1800 / 302-737-7000

WARNINGS

WARNING: Do not lift or suspend loads over people. Stay clear of suspended loads.

WARNING: Do not attempt to overload the attachment beyond its rated capacity, or raise the drum(s) beyond your lift truck's maximum lifting height.

WARNING: Never transport the attachment at its maximum lifting height.

WARNING: Keep hands and feet away from any pinch points, including clamp components and springs.

WARNING: Do not leave the attachment outside in inclement weather for extended periods. Allowing the attachment to get wet may result in damage to the equipment.

WARNING: Never leave the unit unattended with a suspended load.

WARNING: Never wash the unit down. The unit is designed to be wiped down by hand.

WARNING: Do not make alterations or modifications to the unit without Easy Lift Equipment authorization.

Easy Lift Equipment Co., Inc.

2 Mill Park Court, Newark, Delaware 19713 - Phone: 800-233-1800 / 302-737-7000

EAGLE-GRIP® EL4F SERIES ATTACHMENTS OPERATING INSTRUCTIONS

TO ENGAGE AND TRANSPORT UP TO FOUR DRUMS AT A TIME:

1. Raise the attachment with the lift truck carriage and drive the lift truck forward so that the entire attachment is above the drum(s) that need to be picked up.
2. Center the attachment guide arms so that they're aligned between the drum(s) that need to be picked up. The backing plates of the EL4F frame also helps aid the operator in proper placement of the guide arms.
3. Once aligned, fully lower the attachment until the underside of the EL4F frame contacts the top of the drums. Once fully lowered, and contact between the frame and drums has been made, raise the attachment. As the attachment is being raised, the weight of the drum(s) causes the clamping mechanisms to engage and securely grip the chimes of the drums.
4. Initially raise the attachment just a few inches off the ground to ensure that all drums have been properly clamped prior to raising the drum(s) any further. If any drums are not properly engaged, re-lower the attachment to disengage all drums and repeat Step #3.
5. Once all drums are properly engaged and raised, you are now ready to transport the drum(s). Only raise the drum(s) to the minimum height needed for proper floor clearance while transporting the drums to their required destinations. **Never, under any circumstances, should you lift or suspend loads over people.**
6. Once you're ready to release the drum(s), fully lower the drums in their required destination. Once fully lowered, elevate the attachment center guide upward. This motion will disengage the clamping mechanisms from the chimes of the drums and allow you to fully raise and remove the attachment from in between the drums.

Easy Lift Equipment Co., Inc.

2 Mill Park Court, Newark, Delaware 19713 - Phone: 800-233-1800 / 302-737-7000

ATTACHMENTS WITH QUICK-CLAW™ SAFETY RESTRAINT SYSTEM (IN LIEU OF A SAFETY CHAIN)

The patented Quick-Claw™ cam locks secure the attachment firmly to the forks of the lift truck. This option prevents the attachment from sliding off the forks during sudden stops, even when transporting a full load. This also eliminates the need for the operator to dismount and reboard the lift truck to secure or detach a standard safety chain. Unique rotating cams bind to the heel of each fork when the attachment is lifted off the ground. When the cam locks contact the floor, they conveniently release the attachment, allowing the operator to back-out and remove the forks from the attachment. The fork pockets on all Eagle-Grip EL4F series attachments equipped with Quick-Claw cams are 43" in length. This 43" length is designed for use on lift trucks equipped with 42" length forks. The cam locks need to be in a position where the heel of the forks is between 1.25" and 1.75" thick. The lift truck forks should be inspected prior to using the Quick-Claw attachment to verify the fork thickness. In the event the lift truck is equipped with 48" forks, 49" fork pockets will be necessary for proper operation. If the attachment is not built to accommodate 48" length forks, the cam-locks on the Quick-Claw option may not function properly.

SPECIFICATIONS

MODEL	CAPACITY (lb/kg)	WEIGHT (lb/Kg)	H x L x W (inches)	(mm)	DRUMS HANDLE	MOUNTING
EL4F	6000/2700	555/252	26x38x43.5	660x965x1105	1 to 4	Fork Mount
EL4F-SRC	6000/2700	575/261	26x38x43.5	660x965x1105	1 to 4	
EL4FQC	6000/2700	645/293	27x50.5x45	685x1283x1143	1 to 4	
EL4FQC-SRC	6000/2700	665/302	27x50.5x45	685x1283x1143	1 to 4	
EL4CM	6000/2700	525/238	32x38x28	813x965x711	1 to 4	Carriage Mount
EL4CM-SRC	6000/2700	545/247	32x38x28	813x965x711	1 to 4	
EL4CB	6000/2700	479/217	33x26.5x27	635x1270x965	4	Hoist Mount
EL4CB-SRC	6000/2700	499/226	33x26.5x27	635x1270x965	4	

VERTICAL CENTER OF GRAVITY:

The distance measured from the bottom of the attachment to the center point on the frame at which it balances.

EL4F & EL4F-SRC	19.5"	Measured from bottom of frame.
EL4FQC & EL4FQC-SRC	18.5"	Measured from bottom of frame.
EL4CM & EL4CM-SRC	19.5"	Measured from bottom of frame.

HORIZONTAL CENTER OF GRAVITY:

The distance or point that is measured between the beginning of the fork pockets to the end of the attachment which the attachment balances.

EL4F & EL4F-SRC	19.5"	Measured from pocket opening.
EL4FQC & EL4FQC-SRC	26.0"	Measured from pocket opening.
EL4CM & EL4CM-SRC	24.88"	Measured from lift truck carriage.

LOST LOAD/EFFECTIVE THICKNESS:

The amount of horizontal distance, measured from the carriage forward, that is lost from the standard 24" load center when an attachment is added.

EL4F & EL4F-SRC	1.0"
EL4FQC & EL4FQC-SRC	13.5"
EL4CM & EL4CM-SRC	1.0"

OSHA REGULATIONS:

[1910.178\(a\)\(4\)](#)

Modifications and additions which affect capacity and safe operation shall not be performed by the customer or user without the manufacturer's prior written approval. Capacity, operation, and maintenance instruction plates, tags, or decals shall be changed accordingly.

[1910.178\(a\)\(5\)](#)

If the truck is equipped with front-end attachments other than factory installed attachments, the user shall request that the truck be marked to identify the attachments and show the approximate weight of the truck and attachment combination at maximum elevation with load laterally centered.

[1910.178\(a\)\(6\)](#)

The user shall see that all nameplates and markings are in place and are maintained in a legible condition.

Please verify with your local forklift dealer that your lift truck is certified and tagged properly for this attachment.

FOR PARTS, SERVICE OR TECHNICAL QUESTIONS CALL:

EASY LIFT EQUIPMENT

2 MILL PARK CT

NEWARK, DE. 19713

PHONE: 800-233-1800 ; 302-737-7000

FAX: 302-737-7333

WEBSITE: www.easylifteqpt.com

EMAIL: sales@easylifteqpt.com

Easy Lift Equipment Co., Inc.

2 Mill Park Court, Newark, Delaware 19713 - Phone: 800-233-1800 / 302-737-7000

Operator's Daily Checklist

EL4F (Fork Mount) & EL4C (Crane or Hoist) Four Drum Handling Attachment

Inspections Performed by: _____

Note: This inspection must be made by the equipment operator daily at the start of the shift. Check (✓) the appropriate "OK" or "Needs Repair" field.

This Daily Checklist is intended to help verify that the equipment is in proper working order each day.

More thorough Weekly, Monthly and Yearly Maintenance schedules should still be followed.

VISUAL CHECK		DATE: / /		/ /		/ /		/ /		/ /		/ /		/ /	
		OK	Needs Repair	OK	Needs Repair	OK	Needs Repair	OK	Needs Repair	OK	Needs Repair	OK	Needs Repair	OK	Needs Repair
VISUAL CHECK: EL4F ATTACHMENT FRAME	DATA PLATES & WARNING DECALS - Data Plates & Warning Decals are affixed to the unit and in good condition														
	FRAME DAMAGE - Look for bent, dented or broken parts. This includes frame welds, bolted connections, belts (for carriage mount models), fork pockets or Quick-Claw (if applicable)														
	SAFETY CHAIN OR QUICK-CLAW - Verify that all the components of the Safety Chain or Quick-Claw (if applicable) are free of damage and not missing components														
	CARRIAGE MOUNT MODELS - Ensure that the locking pins are pushed down and the attachment is mounted securely to the fork mount carriage. (this is for carriage mount models only)														
VISUAL CHECK: EL4C HOIST FRAME	DATA PLATES & WARNING DECALS - Data Plates & Warning Decals are affixed to the unit and in good condition														
	FRAME DAMAGE - Look for bent, dented or broken parts. This includes frame welds, bolted connections, and hoist loops														
	OVERHEAD CRANE OR HOIST - Ensure that all overhead hoist support chains are properly secured and don't show any signs of wear or damage														
	OVERALL CARE, USE AND INSPECTION - Verify that care, use and inspection is done in accordance with <u>ASME B30.20</u> Below-the-Hook Lifting Device Standards and Manufacturer's Instructions. (See Manual for more details)														
VISUAL CHECK: CLAMPS	CLAMP DAMAGE - Perform a visual inspection of the clamping components, checking for loose or damaged springs, pins and jaws														
	CLAMP PINS - Confirm that all pins, cotter pins and springs are accounted for and secure														

Checklist Continued on Next Page

Easy Lift Equipment Co., Inc.

2 Mill Park Court, Newark, Delaware 19713 - Phone: 800-233-1800 / 302-737-7000

Operator's Daily Checklist (cont.)

EL4F (Fork Mount) & EL4C (Crane or Hoist) Four Drum Handling Attachment

OPERATIONAL CHECK		DATE: / /		/ /		/ /		/ /		/ /		/ /	
		OK	Needs Repair	OK	Needs Repair	OK	Needs Repair	OK	Needs Repair	OK	Needs Repair	OK	Needs Repair
OPERATIONAL CHECK (EL4F): LIFT TRUCK ATTACHMENT	FORK POCKETS - Verify that forks of your lift truck fit accordingly into the fork pockets of your EL4F Attachment												
	RATED CAPACITY - Confirm that the weight of the loads to be handled do not exceed the rated capacity of your EL4F												
	SAFETY CHAIN - Confirm that the Safety Chain is properly connected to the carriage of your lift truck using either the Cam Lock or Snap Hook systems												
	QUICK-CLAW - When raising the Attachment off the ground, ensure that the Cam Locks of the Quick-Claw Safety Restraint System (if applicable) properly secure to your lift truck forks												
OPS. CHECK (EL4C): CRANE OR HOIST	RATED CAPACITY - Confirm that the weight of the loads to be handled do not exceed the rated capacity of your EL4C or the rated capacity of your crane/hoist chains												
	OVERHEAD CRANE OR HOIST - Ensure that all overhead crane or hoist support chains are properly secured and in good working condition												
EL4 CLAMPS	CLAMP FUNCTION - CAREFULLY verify the clamps properly grip and lift drums prior to beginning a full application. Only lift the "test" drums to the minimum height required to ensure the clamps are in proper working order												

List the details of all required repairs in the comments section below. Then, **tag and decommission the equipment for safety.**

Comments (items needing repair or adjustment):

Caution – If the equipment is found to be in need of repair or in any way unsafe, or contributes to an unsafe condition, the matter shall be reported immediately to the designated supervisor, and the attachment shall not be operated until it has been restored to a safe operating condition. If during operation, the attachment becomes unsafe in any way, the matter shall be reported immediately to the designated supervisor, and the attachment shall not be operated until it has been restored to safe operating condition. Do not make repairs or adjustments unless specifically authorized to do so.

Easy Lift Equipment Co., Inc.

2 Mill Park Court, Newark, Delaware 19713 - Phone: 800-233-1800 / 302-737-7000

EAGLE-GRIP® ATTACHMENT MAINTENANCE SCHEDULES

Easy Lift Equipment recommends the following maintenance intervals.

Failure to do so could cause the equipment not to work as intended.

MONTHLY INTERVALS

Eagle-Grip Frame	Thoroughly check the frame and masts for any cracked welds or structural damage.
Eagle-Grip Fork Pockets	Flip the attachment forward & thoroughly inspect the fork pocket ends for cracked welds or structural damage.
Safety Chain (Snap Hook or Cam Lock)	Thoroughly check the safety chain, as well as the snap hook or cam lock systems for wear, damage and/or missing components.
Belts	Thoroughly check belts (if applicable) for wear or damage. Also ensure proper tension. (contact Easy Lift Equipment for details)
Eagle-Grip Clamping Head(s)	Thoroughly inspect the clamping head(s) for bent, dented or broken clamp components. This includes the clamp outer and inner housings, clamping jaws, retaining pins, cotter pins, and springs.
Eagle-Grip Clamping Head(s)	Lubricate clamping mechanisms For both Non-FDA & FDA Equipment: WD-40, Berkebile White Lithium Grease or comparable

YEARLY INTERVALS

Eagle-Grip Clamping Head(s) Springs	Replace all clamping mechanism springs. See cooresponding PM Kit for details.
--	---

EVERY THREE YEARS*

Eagle-Grip Clamping Head(s) Pins & Links	Replace all clamping mechanism pins and links. See cooresponding PM Kit for details.
---	--

* If regularly handling over 1,000 drums weekly, it is recommended to conduct this maintenance inspection/replacement every 18 months.

Easy Lift Equipment Co., Inc.

2 Mill Park Court, Newark, Delaware 19713 - Phone: 800-233-1800 / 302-737-7000

EASY LIFT EQUIPMENT WARRANTY POLICY FOR MODELS WITH PREFIXES: ED/ER/EL/ELDR/EG & RCR

Easy Lift Equipment (“ELE”) warrants each new product to be free from factory material and workmanship defects, under normal use with proper maintenance, for a period of 12 months. Warranty coverage for this warranty period is provided by authorized dealers and includes parts. Labor is covered for the same periods of 12 months as outlined above. Please call ELE for the authorized repair dealer in your area.

ELE shall be the sole judge of the validity of any claim or defect and may elect to make any replacement or repair of any part thereof that it has agreed to be defective. Wearable Items such as: hoses, bearings, belts, brushes, seals, lift motors, clamp motors, relays, fuses, springs and wheels are wear items not covered under the warranty policy. ELE assumes no responsibility whatsoever to work done, parts replaced, or expenses incurred not specifically authorized by ELE. Normal maintenance or replacement of service items is not covered by this warranty. No warranty claims will be considered for customers with any delinquent outstanding balance. When batteries, battery chargers, scale printers or scale indicators are purchased from ELE with the equipment, the original manufacturer’s warranty applies.

WARRANTY LIMITATION/DISCLAIMERS:

Easy Lift Equipment reserves the right to void warranty coverage if the unit has been overloaded beyond rated capacity; damaged due to: abuse, misuse, neglect, accidents, freight damage, improper usage, improper repair, and/or improper storage; or any modification or repair conducted in a manner not approved by Easy Lift Equipment. Equipment used in freezers, abrasive, corrosive, and/or excessively moist conditions must be properly equipped for the environment to ensure the warranty is not voided. Warranty questions and claims should be directed to our customer service department. ELE customer service representatives will help you assess and resolve the claim or assist you in contacting the local authorized dealer or representative. The warranty described here shall constitute the sole remedy of the authorized dealer and/or the initial purchaser. ELE neither assumes nor authorizes any person to assume for it any other obligation or responsibility in connection with this product warranty. In no event shall ELE be responsible for direct, indirect, special or consequential damages or any other delay or any economic or commercial loss resulting from Easy Lift Equipment’s performance or non-performance under this warranty. This warranty is expressly in lieu of all warranties, obligations or responsibilities of ELE dealers or other authorized source, expressed, implied or statutory.

SUBMITTING CLAIMS:

To make a claim under this policy, please contact Easy Lift Equipment for assistance. We can be reached by calling 800-233-1800 ext. 4 for customer service or by writing to sales@easylifteqpt.com. Do not return defective parts unless a return authorization (RA) has been provided requesting the return. If requested, we will provide shipping information on how the part should be returned and bear the expense for the return shipping, if the part is proven to be defective. A copy of the work order made at the time of the repair and parts claimed under warranty may be requested for ELE’s inspection.

ORDERING PARTS:

Easy Lift Equipment’s parts are distributed through our customer service department and ship the same day as ordered whenever possible. You will be well taken care of whenever parts, adjustments or repairs are needed.

When contacting ELE, please be sure to state the model and serial number for the equipment. There is no cost for electronic copies of replacement manuals, parts lists and other general information containing part numbers and nomenclature. Most manuals contain parts pricing, but it is not guaranteed to be valid as parts pricing can change at any time without notice. Any customer service representative can provide timely parts quotations upon request. Adherence to above procedure will save time and provide prompt assistance when it counts. You are of course always welcome to bring to us any questions, comments or recommendations pertaining to your Easy Lift Equipment products.

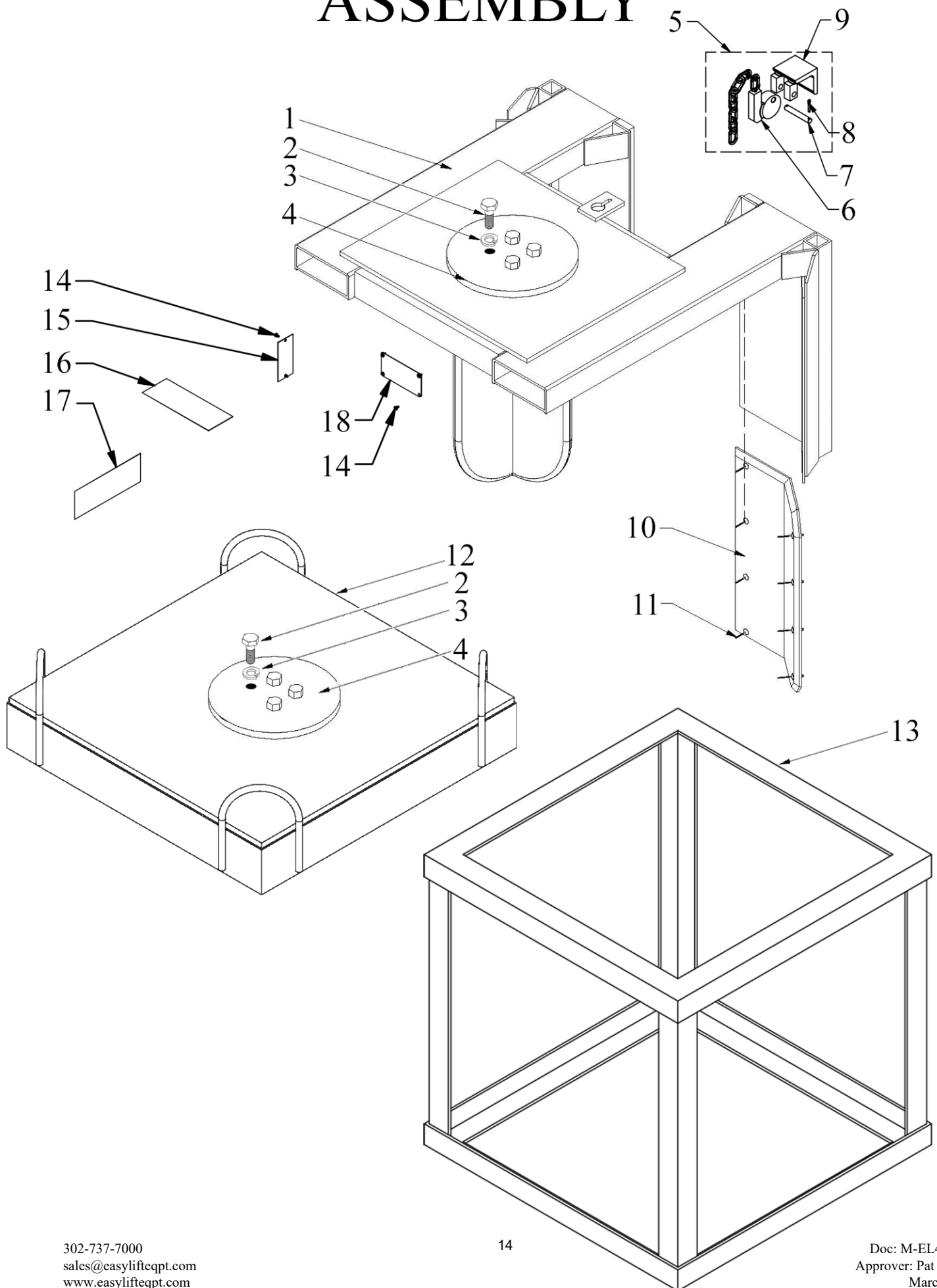
MANUFACTURER CONTACT INFORMATION:

Easy Lift Equipment Co., Inc.
2 Mill Park Ct.
Newark, DE 19713
Email: sales@easylifteqpt.com

Phone: 800-233-1800: 302-737-7000
Fax: 302-737-7333
Website: www.easylifteqpt.com

THIS PAGE INTENTIONALLY LEFT BLANK

EL4 FRAMES ASSEMBLY

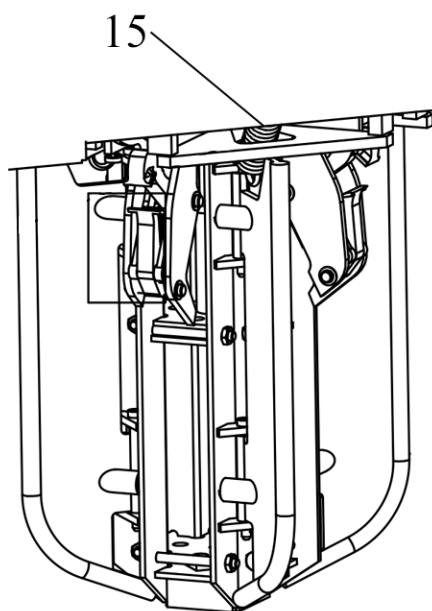
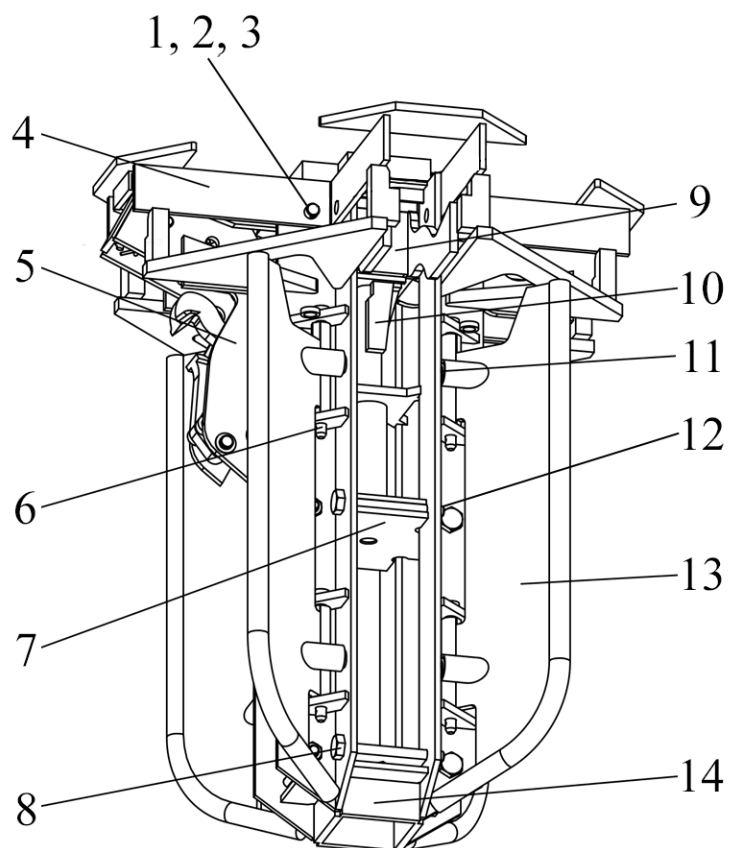


EL4 FRAMES PARTS LIST

<u>ITEM</u>	<u>PART NO.</u>	<u>DESCRIPTION</u>	<u>QTY</u>
1	2410	Long Frame Carrier	1
2	M20-2.5 x 40 MM HHCS	M20-2.5 x 40 mm Hex Head Cap Screw (zinc)	4
3	M20 LW	M20 Lock Washer (zinc)	4
4	600181-5405	Plate-Carrier Mounting	1
5	504	Safety Chain & Cam Lock Assembly	1
6	0504D	Cam, Cam Lock	1
7	4006-1	Pin, Cam Lock	1
8	6006-CP	Cotter Pin, 5/32" x 1" (zinc)	2
9	0504A	Clamp, Cam Lock (zinc)	1
10	3530370	EL4 Stainless Steel Carrier Backing Plate with SBR (each)	2
11	97525A655	18-8 SS Blind Rivet, Large diameter domed head, 3/16" diameter, 0.626" - 0.75" Thickness	16
12	3530147	EL4C Weldment	1
13	3530148	EL4C Stand	1
14	6 x 1/4 RUDES-SS	6 x 1/4 Round Head U Drive Screw (stainless steel)	6
15	MCL044991	PM Tag	1
16	ADART002	Attention Read Operations Manual Decal	1
17	ADART015	ELE Address Decal (Horizontal)	2
18	MCL007031	Specification Plate	1
18	3530497	EL4C (ASME B30.20) Specification Plate	* 1

* For EL4C Underhook Series Attachment models only, in lieu of MCL007031.

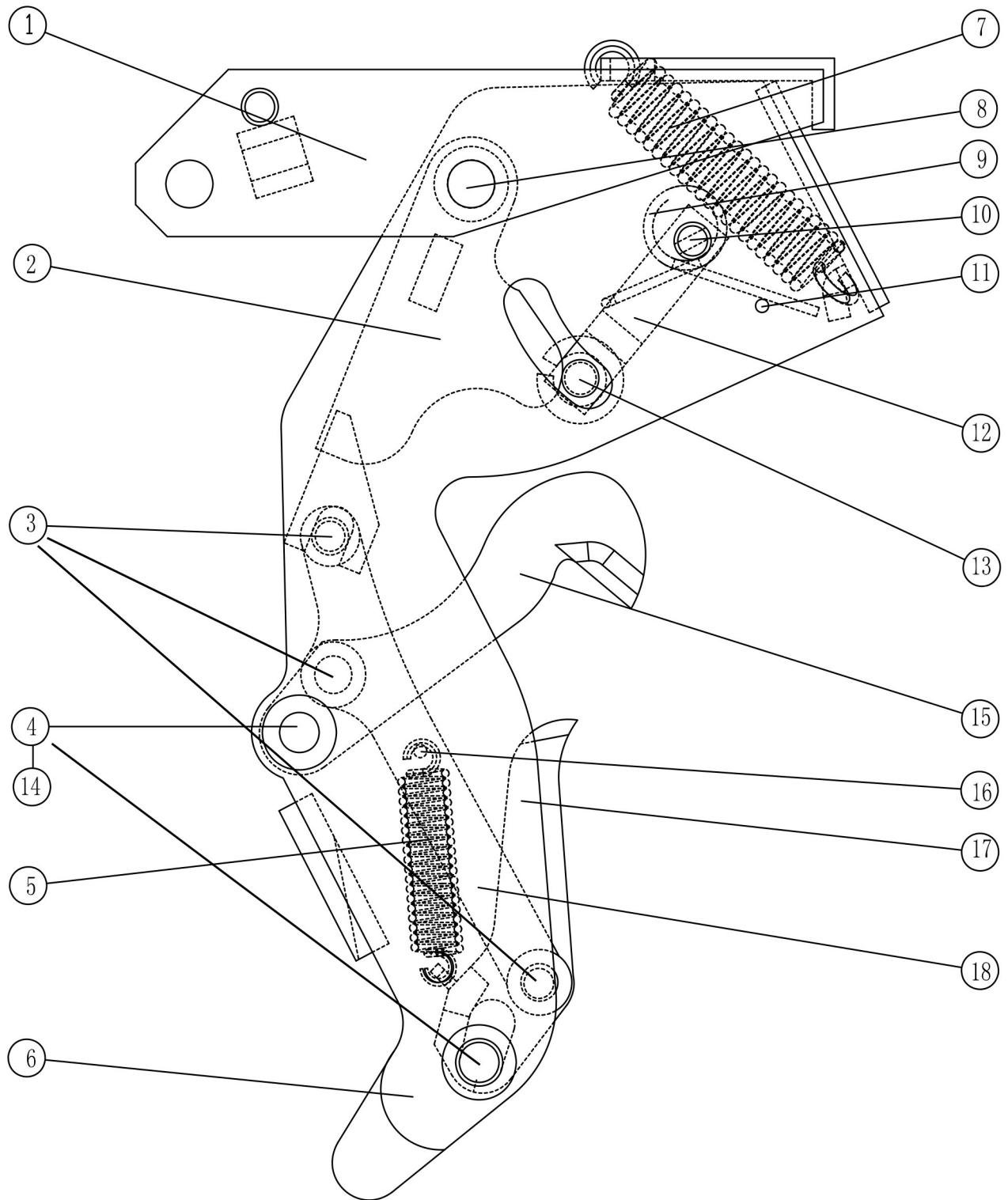
EL4 CENTER ASSEMBLY



EL4 CENTER PARTS LIST

<u>ITEM</u>	<u>PART NO.</u>	<u>DESCRIPTION</u>	<u>QTY</u>
1	6006-CP	Cotter Pin, 5/32" x 1" (zinc)	8
2	16035-1	1/2" x 4-3/4" Case Hardened Pin (zinc)	4
3	6040-6401	Spring - Cantilever to Frame	4
4	2054-2401	Long Frame (Center)	1
4	2054-2401SS	Long Frame (Center) - SRC Stainless Steel	1
5	4043-8403	EL4 Clamping Mechanism Assembly	4
5	4043-8403SS	EL4 Clamping Mechanism Assembly (Stainless Steel)	4
6	21251-2409	Pin Guide Plate with Cotter Pins	8
7	21191-2405	Upper Spacer Block	1
8	3/8-16 x 4 1/4 HHCS-SS	3/8-16 x 4 1/4 Hex Head Cap Screw (stainless steel)	8
9	2120-8402	Complete Spider Assembly	1
9	2120-8402SS	Spider Assembly - SRC Stainless Steel	1
10	490321-8401	Holding Block Assembly	1
11	6039-6407	Spring Entering Guide Plate	16
12	3/8-16 THIN NLN-SS	3/8-16 THIN Nylon Locking Nut (stainless steel)	8
13	2055-2408	Entering Guide Plate	4
13	2055-2408SS	Entering Guide Plate - SRC Stainless Steel	4
14	21192-2406	Lower Spacer Block	1
14	21192-2406SS	Lower Spacer Block - SRC Stainless Steel	1
15	4206	Spring, Clevis (zinc)	4

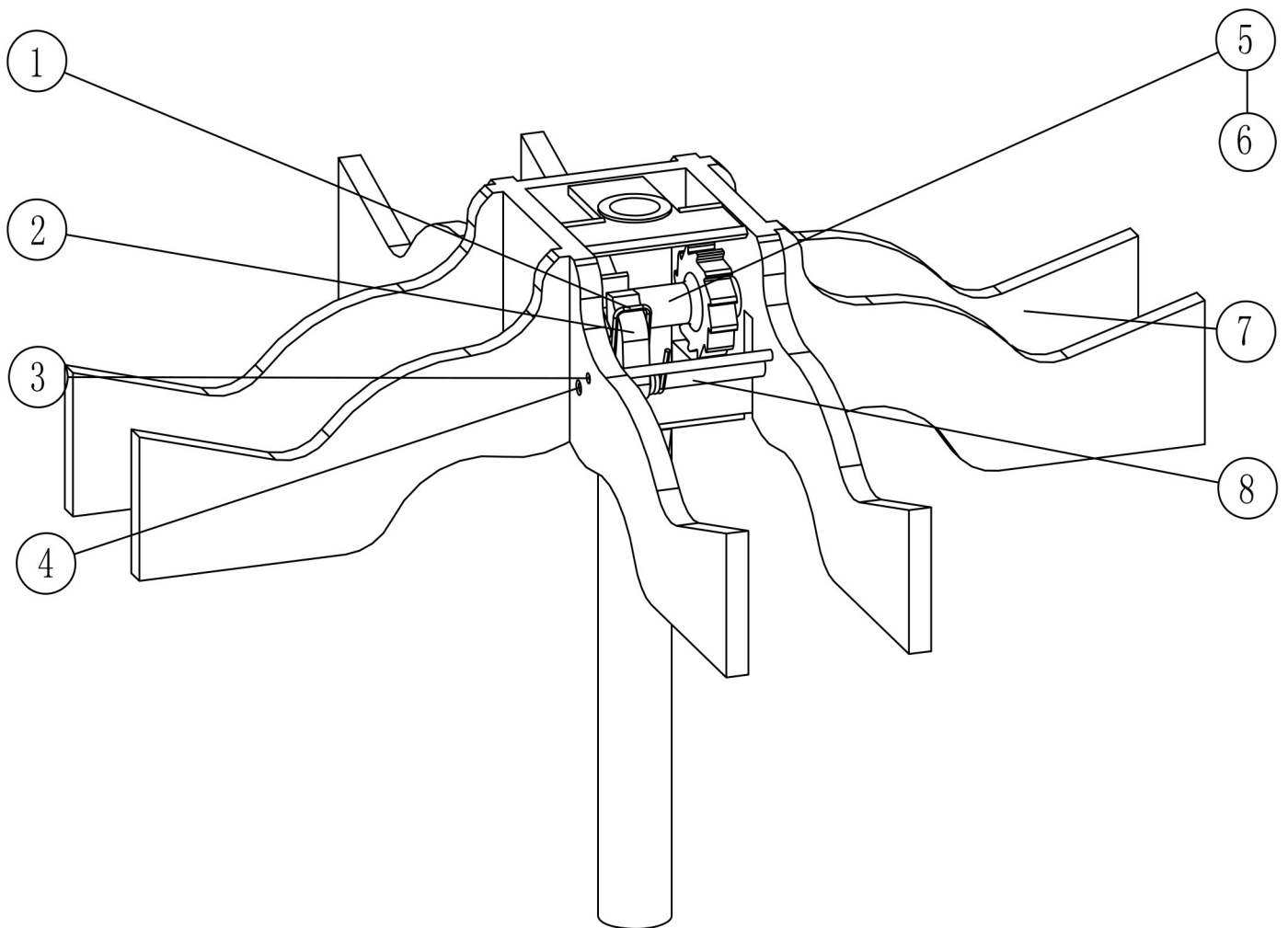
EL4F CLAMPING ASSEMBLY



EL4F CLAMPING ASSEMBLY PARTS LIST

<u>ITEM</u>	<u>PART NO.</u>	<u>DESCRIPTION</u>	<u>QTY</u>
1	2116-2402	Cantilever - Housing to Frame	4
2	2121-2404	Cantilever - Indexing	4
3	72041	3/8" x 1-1/2" Pin, Link to Upper Jaw (zinc)	12
4	16033-1	1/2" x 2.625" Pin, Clevis (zinc)	8
5	4306	Jaw Spring (zinc)	4
6	2122-2403	Housing - Clamp	4
6	2122-2403SS	Housing - Clamp - SRC Stainless Steel	4
7	6042-6402	Spring - Housing to cantilever	4
8	16032-1	1/2" x 3-1/2" 4140 Hardened Pin (zinc)	4
9	6041-6403	Spring - Index Link to Housing	4
10	15104-1SS	3/8" x 2.242" Pin, Fibre Guard, Housing to Clevis (stainless steel)	4
11	6059-1403	Roll Pin	4
12	190411-5401	Indexing Link	4
13	140391-1405	3/8" x 3-1/8" Pin with Small Cotter Pin	4
14	6006-CP	Cotter Pin, 5/32" x 1" (zinc)	24
15	7009-7401	Upper Jaw	4
15	7009SS	Stainless Steel Upper Jaw T09605 (Spark Resistant)	4
16	14002-1407	Pin	4
17	7012-7402	Lower Jaw	4
17	7012SS	Stainless Steel Lower Jaw T09605 (Spark Resistant)	4
18	7018-7403	Link - Jaw to Jaw	8
	4043-8403	EL4 Clamping Mechanism Assembly	4
	4043-8403SS	EL4 Clamping Mechanism Assembly (Stainless Steel)	4

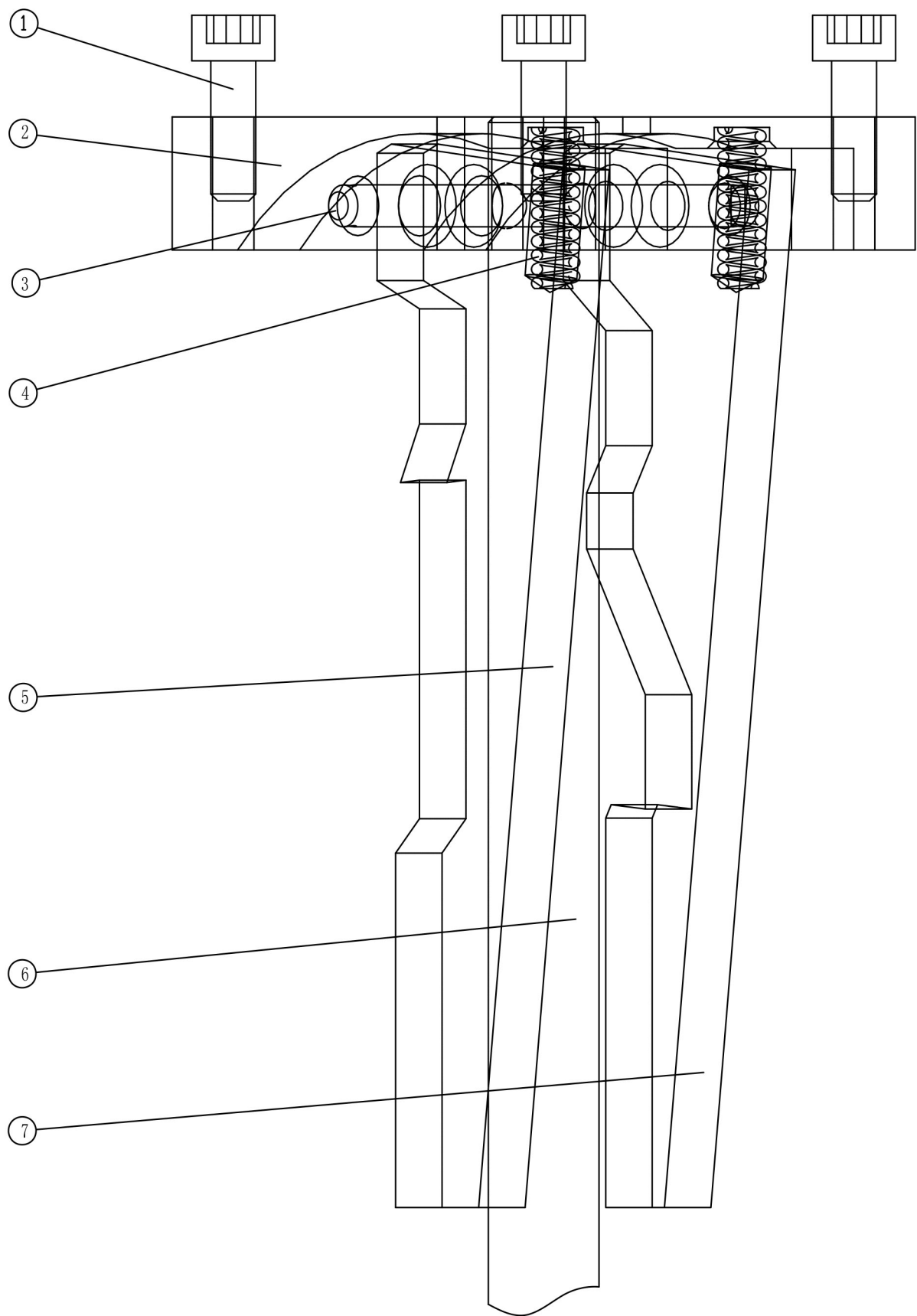
EL4F SPIDER ASSEMBLY



EL4F SPIDER ASSEMBLY PARTS LIST

<u>ITEM</u>	<u>PART NO.</u>	<u>DESCRIPTION</u>	<u>QTY</u>
1	6038-6406	Spring	1
2	7011-7405	Ratchet Cam Stop Pawl	1
3	14041-1410	Pin	1
4	14035-1409	Pin	1
5	7010-7404	Ratchet Cam with Bushings	1
6	140341-1408	Pin with Cotter Pins	1
7	2120-2407	Spider with Bushings	1
7	2120-2407SS	Stainless Steel Spider with Bushings	1
8	10038-5404	Spacer Tubing/Sleeve	1
	2120-8402	Complete Spider Assembly	1
	2120-8402SS	Spider Assembly - SRC Stainless Steel	1

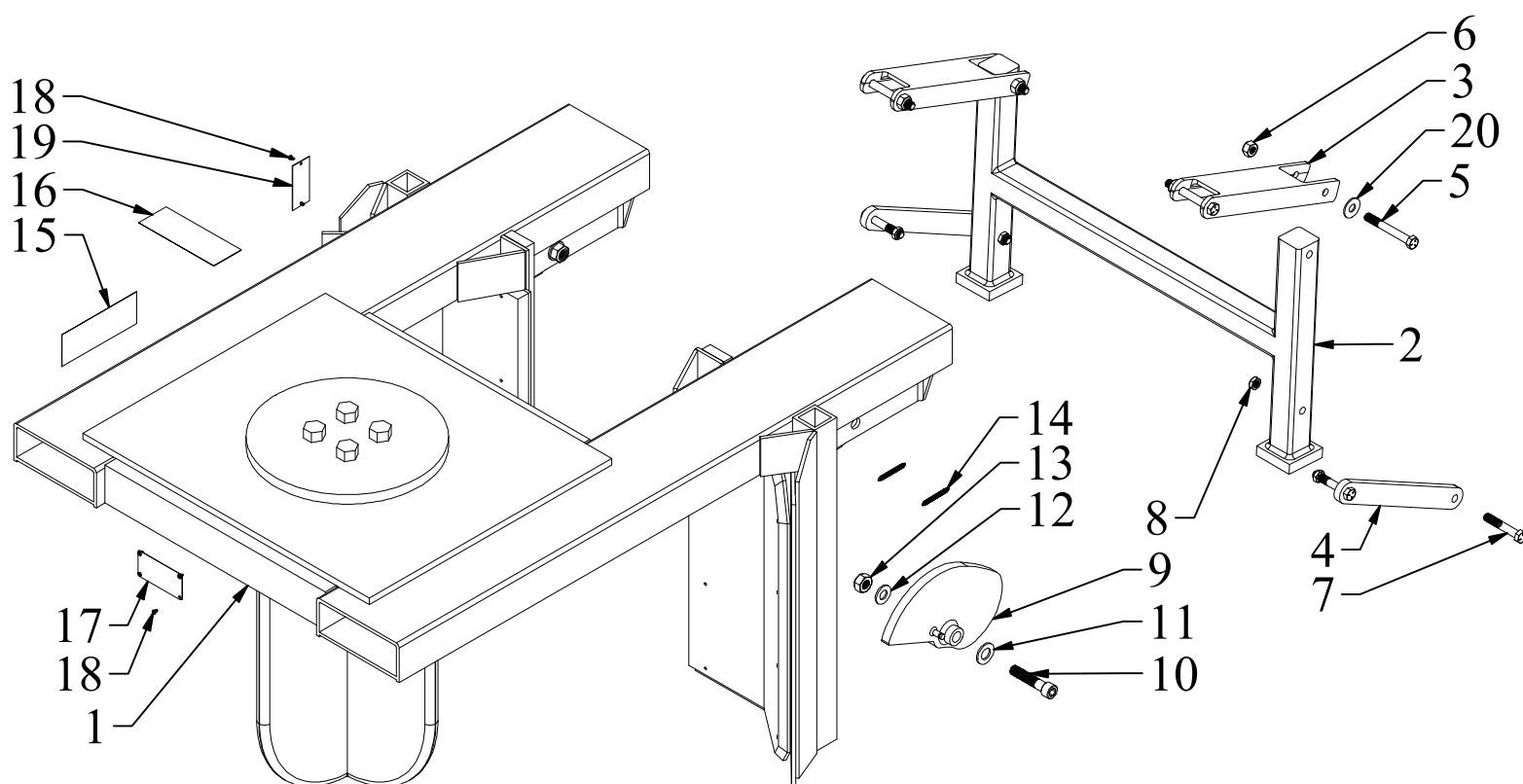
EL4F HOLDING BLOCK ASSEMBLY



EL4F HOLDING BLOCK PARTS LIST

<u>ITEM</u>	<u>PART NO.</u>	<u>DESCRIPTION</u>	<u>QTY</u>
1	6105-4403	Cap Screw	4
2	490321-5403	Holding Block	1
3	140341-1408	Pin with Cotter Pins	1
4	6036-6405	Spring - Holding/Ratchet Pawl	2
5	7014-7406	Ratchet Pawl with Bushing	1
6	160301-5402	Guide Shaft	1
7	7013-7407	Holding Pawl	1
	490321-8401	Holding Block Assembly	1

EL4F QUICK-CLAW ASSEMBLY



EL4F QUICK CLAW PARTS LIST

<u>ITEM</u>	<u>PART NO.</u>	<u>DESCRIPTION</u>	<u>QTY</u>
1	2410-QC	EL4-FQC Long Frame Carrier Only	1
2	3530378	EL4 QC Legs	1
3	3530376	EL4 QC Under Cam Channel (each)	2
4	3530377	EL4 QC Linkage Arm (each)	2
5	1/2-13 x 3 3/4 HHCS	1/2-13 x 3 3/4 Hex Head Cap Screw Grade 5 (zinc)	4
6	1/2-13 NLN	1/2-13 Nylon Locking Nut (zinc)	4
7	1/2-13 x 3 HHCS	1/2-13 x 3 Hex Head Cap Screw Grade 5 (zinc)	4
8	1/2-13 THIN NLN	1/2-13 Nylon Locking Nut (THIN)	4
9	QCC2.5	Single Cams	2
10	3/4 x 3 SSS	3/4 x 3 Socket Shoulder Screw 5/8-11 Thread (alloy)	2
11	3/4 FW SAE	3/4 Flat Washer SAE (zinc)	2
12	5/8 FW SAE	5/8 Flat Washer SAE (zinc)	2
13	5/8-11 SLN	5/8-11 Stover Lock Nut (zinc)	2
14	KH100799	Spring (zinc)	4
15	ADART015	ELE Address Decal (Horizontal)	2
16	ADART002	Attention Read Operations Manual Decal	1
17	MCL007031	Specification Plate	1
18	6 x 1/4 RUDS-SS	6 x 1/4 Round Head U Drive Screw (stainless steel)	6
19	MCL044991	PM Tag	2
20	1/2 FW	1/2 Flat Washer (zinc)	4

EL4F
SPARE PARTS LIST

<u>PART NO.</u>	<u>DESCRIPTION</u>	<u>QTY</u>
4206	Spring, Clevis (zinc)	4
16035-1	1/2" x 4-3/4" Case Hardened Pin (zinc)	4
6040-6401	Spring - Cantilever to Frame	4
6039-6407	Spring Entering Guide Plate	4
2121-2404	Cantilever - Indexing	1
16033-1	1/2" x 2.625" Pin, Clevis (zinc)	8
4306	Jaw Spring (zinc)	4
6042-6402	Spring - Housing to cantilever	4
6041-6403	Spring - Index Link to Housing	4
140391-1405	3/8" x 3-1/8" Pin with Small Cotter Pin	4
3006-CP	Cotter Pin, 1/8" x 3/4" (zinc)	4
7009-7401	Upper Jaw	1
7012-7402	Lower Jaw	1
6038-6406	Spring	1
B-800	White Lithium Grease Can	1

EL4F-SRC
SPARE PARTS LIST

<u>PART NO.</u>	<u>DESCRIPTION</u>	<u>QTY</u>
4206	Spring, Clevis (zinc)	4
16035-1	1/2" x 4-3/4" Case Hardened Pin (zinc)	4
6040-6401	Spring - Cantilever to Frame	4
6039-6407	Spring Entering Guide Plate	4
2121-2404	Cantilever - Indexing	1
16033-1	1/2" x 2.625" Pin, Clevis (zinc)	8
4306	Jaw Spring (zinc)	4
6042-6402	Spring - Housing to cantilever	4
6041-6403	Spring - Index Link to Housing	4
140391-1405	3/8" x 3-1/8" Pin with Small Cotter Pin	4
3006-CP	Cotter Pin, 1/8" x 3/4" (zinc)	4
7009SS	Stainless Steel Upper Jaw T09605 (Spark Resistant)	1
7012SS	Stainless Steel Lower Jaw T09605 (Spark Resistant)	1
6038-6406	Spring	1
B-800	White Lithium Grease Can	1