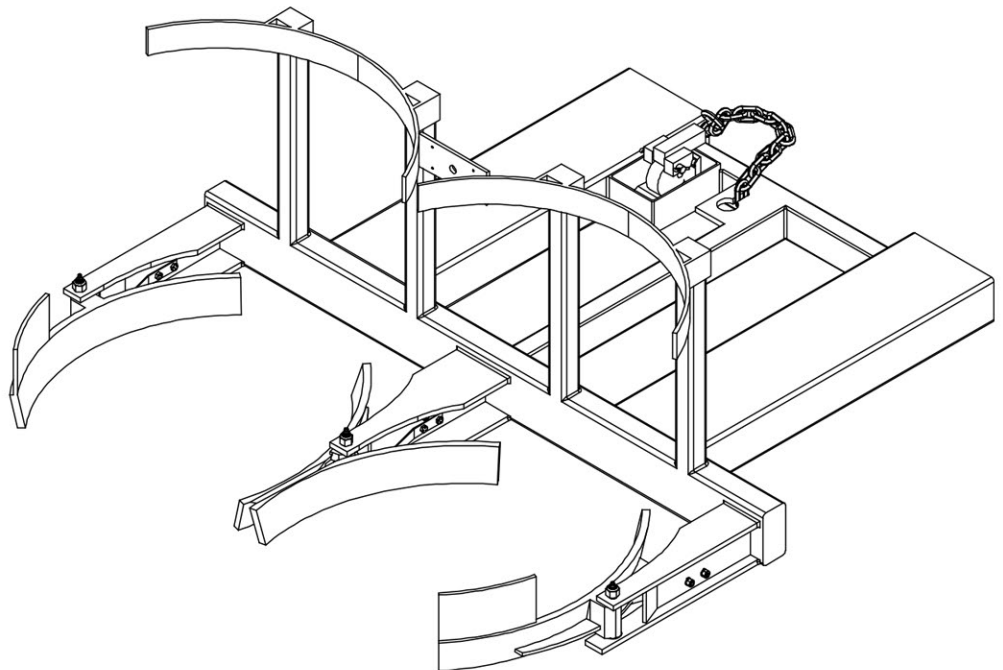
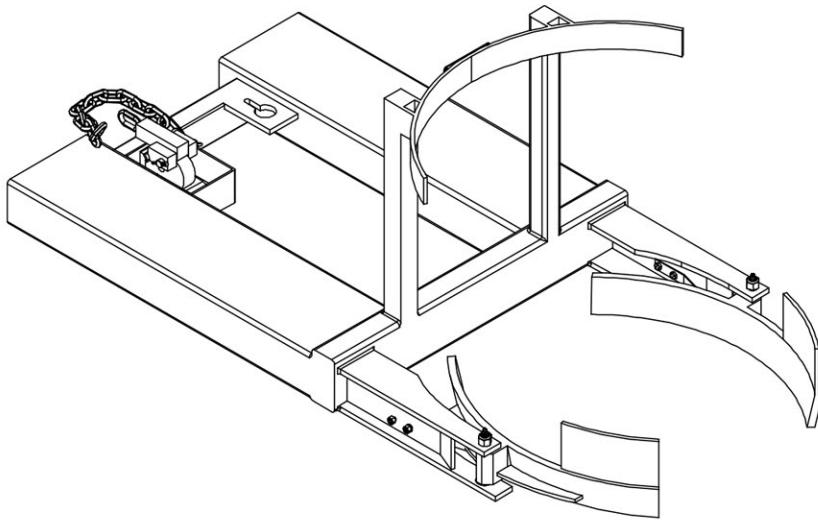


Easy Lift Equipment Co., Inc.

2 Mill Park Court, Newark, Delaware 19713 - Phone: 800-233-1800 / 302-737-7000

EAGLE-POLY GRIP ATTACHMENTS OPERATION & MAINTENANCE INSTRUCTIONS



EASY LIFT EQUIPMENT EAGLE-POLY GRIP (EPG) ATTACHMENTS

INTRODUCTION

Eagle-Poly Grip (EPG) attachments utilize automatic spring-loaded arms for handling European style plastic drums which have larger lids and chimes making traditional handling methods difficult. The EPG attachment solves this issue by picking these drums up from the tapered bottom. This method is necessary when loading or unloading drums that are triple stacked in overseas shipping containers with minimal clearance between the tops of drums and the container ceiling. The fork pockets and safety chain provide a quick and easy connection to any lift truck. The specification plate affixed to each attachment provides the following information: model number, serial number, attachment weight, and lifting capacity. Please verify with your local forklift dealer that your lift truck is certified and tagged properly for this attachment.

This manual contains information to help instruct operators on the proper use and maintenance of your Eagle-Poly Grip (EPG) lift truck attachment. This manual should be made available to all operators who will use this equipment. Properly following the maintenance procedures will help ensure a safe and reliable service life. Do not operate this equipment until you read and fully understand these instructions.

COMMISSIONING YOUR EPG ATTACHMENT

1. Perform a visual inspection of the entire unit for damage.
2. Remove all packing materials, protective strapping, and wood shipping blocks. It is recommended to use protective eye gear when cutting any metal strapping.
3. Using a company forklift, carefully drive the lift truck and position the forks inside the attachment fork pockets. Then, lift and remove the attachment from the shipping pallet.
4. Secure the attachment to the lift truck by connecting the Cam Lock to the forklift's carriage. Some models *may* come with a snap hook safety chain – in those cases the chain is looped around the carriage and the snap hook is connected to the chain to form a loop.

Easy Lift Equipment Co., Inc.

2 Mill Park Court, Newark, Delaware 19713 - Phone: 800-233-1800 / 302-737-7000

DAILY SAFETY INSPECTION

Do not operate your EPG attachment if you notice any unsafe condition(s) that may have been caused by an accident or malfunction. Immediately report this condition to your supervisor.

1. Ensure Data Plates & Warning Decals are affixed to the unit and in good condition.
2. Perform a visual inspection, checking for dented or broken parts. This includes frame welds, bolted connections, fork pockets, arms and springs.
3. Verify that no hardware, springs or pins are missing, loose or not properly installed.
4. Verify that all the components of the Safety Chain and Cam Lock are free of damage or missing components.
5. Verify that forks of your lift truck fit accordingly into the fork pockets of your Eagle-Poly Grip Attachment.
6. Confirm that the Safety Chain is properly connected to the carriage of your lift truck using either the Cam Lock or Snap Hook systems.
7. Observe the condition of the equipment for any other malfunction or defect.

If any of these tests are failed, tag the unit properly to keep it out of service until the problem has been resolved. Notify a Supervisor immediately.

SAFETY PRACTICES

1. Do not lift loads that exceed the rated capacity of the unit.
2. During transportation, only lift the drum(s) to the minimum height required for proper floor clearance while transporting the drum(s) to the required destination.
3. Keep hands and feet clear of the clamping saddle(s), lifting area in front of the unit, and the area underneath an elevated drum.
4. Be certain the clamping saddle(s) have made a secure grip onto the lower half of the drum before attempting to move or transport a load.
5. **Do not lift or suspend loads over people. Stay clear of suspended loads.**

Easy Lift Equipment Co., Inc.

2 Mill Park Court, Newark, Delaware 19713 - Phone: 800-233-1800 / 302-737-7000

WARNINGS

WARNING: Do not lift or suspend loads over people. Stay clear of suspended loads.

WARNING: Do not attempt to overload the attachment beyond its rated capacity or raise the drum(s) beyond your lift truck's maximum lifting height.

WARNING: Never transport the attachment at its maximum lifting height.

WARNING: Keep hands and feet away from the pinch points, arm pivot points, clamping saddles and other clamp components and springs.

WARNING: Do not leave the attachment outside in inclement weather for extended periods. Allowing the attachment to get wet may result in damage to the equipment.

WARNING: Never leave the unit unattended with a suspended load.

WARNING: Never wash the unit down. The unit is designed to be wiped down by hand.

WARNING: Do not make alterations or modifications to the unit without Easy Lift Equipment authorization.

EAGLE-POLY GRIP ATTACHMENT OPERATING INSTRUCTIONS

TO ENGAGE AND TRANSPORT DRUMS:

1. Lower the attachment to a level that matches the lower tapered section(s) of the drum(s).
2. Drive the lift truck forward until the drum(s) rest firmly against the back rest(s) of the EPG.
3. Tilt the lift truck carriage back toward the operator.
4. Raise the attachment to fully engage the drum(s). The lift truck can now be driven to transport the drum(s).

TO RELEASE DRUM(S):

1. Tilt the lift truck carriage forward so the bottom of the drum is even with the flat surface. Lower the drum(s) to floor, pallet or other level surface.
2. Once the clamping saddles are free from the drum(s) slowly back away from drum(s) until the clamping saddles disengage the drum completely.

Easy Lift Equipment Co., Inc.

2 Mill Park Court, Newark, Delaware 19713 - Phone: 800-233-1800 / 302-737-7000

Operator's Daily Checklist EPG Eagle-Poly Grip Attachment

Inspections Performed by: _____

Note: This inspection must be made by the equipment operator **daily** at the start of the shift. Check (✓) the appropriate "OK" or "Needs Repair" field.

This Daily Checklist is intended to help verify that the equipment is in proper working order each day.

More thorough Weekly, Monthly and Yearly Maintenance schedules should still be followed.

		DATE: / /		/ /		/ /		/ /		/ /		/ /		/ /	
		OK	Needs Repair	OK	Needs Repair	OK	Needs Repair	OK	Needs Repair	OK	Needs Repair	OK	Needs Repair	OK	Needs Repair
VISUAL CHECK: FRAME, MAST(S) & ARMS	DATA PLATES & WARNING DECALS - Data Plates & Warning Decals are affixed to the unit and in good condition														
	DAMAGE - Look for bent, dented or broken parts. This includes frame welds, bolted connections, fork pockets, arms and springs														
	MISSING OR LOOSE PARTS - Verify that no hardware, springs or pins are missing, loose or not properly installed														
	SAFETY CHAIN - Verify that all the components of the Safety Chain are free of damage or missing components														
OPERATIONAL CHECK: FRAME, MAST(S) & ARMS	FORK POCKETS - Verify that forks of your lift truck fit accordingly into the fork pockets of your Eagle-Poly Grip Attachment														
	SAFETY CHAIN - Confirm that the Safety Chain is properly connected to the carriage of your lift truck using either the Cam Lock or Snap Hook systems														
	CLAMPING ARMS - Using an appropriate "test" drum (or drums), verify that the EPG Clamping Arms properly grip and pick up a drum(s). Only lift the "test" drum(s) to the minimum height required to ensure proper operation of the EPG clamping arm(s). Then verify that the arms return back to "open" position when the drum(s) are set back down														

List the details of all required repairs in the comments section below. Then, **tag and decommission the equipment for safety.**

Comments (items needing repair or adjustment): _____

Caution – If the equipment is found to be in need of repair or in any way unsafe, or contributes to an unsafe condition, the matter shall be reported immediately to the designated supervisor, and the attachment shall not be operated until it has been restored to a safe operating condition. If during operation, the attachment becomes unsafe in any way, the matter shall be reported immediately to the designated supervisor, and the attachment shall not be operated until it has been restored to safe operating condition. Do not make repairs or adjustments unless specifically authorized to do so.

Easy Lift Equipment Co., Inc.

2 Mill Park Court, Newark, Delaware 19713 - Phone: 800-233-1800 / 302-737-7000

EAGLE-POLY GRIP ATTACHMENT MAINTENANCE SCHEDULES

Easy Lift Equipment recommends the following maintenance intervals.
Failure to do so could cause the equipment not to work as intended.

MONTHLY INTERVALS

Eagle-Poly Frame	Thoroughly check the frame and masts for any cracked welds or structural damage.
Eagle-Poly Fork Pockets	Raise the attachment & thoroughly inspect the fork pocket ends for cracked welds or structural damage.
Safety Chain (Snap Hook or Cam Lock)	Thoroughly check the safety chain, as well as the snap hook or cam lock systems (which ever is applicable) for wear, damage and/or missing components.
Eagle-Poly Clamping Saddles	Thoroughly inspect the clamping saddles for bent, dented or broken clamp components. This includes the outer and inner saddles (if applicable), retaining pins, cotter pins, and flat spring(s).

SIX-MONTH INTERVALS

Lubricate Eagle-Poly Arm Pivot Fittings	Pump bearing grease into the arm pivot fittings.
--	--

YEARLY INTERVALS

Eagle-Poly Skid Plates	Inspect the Skid Plates (pictured below), which are located on the bottom of the fork pockets, underneath the frame. Ensure the Skid Plates are not significantly worn or damaged. If the Skid Plates become too damaged or worn, this may result in additional fork pocket damage.
---------------------------	---



Easy Lift Equipment Co., Inc.

2 Mill Park Court, Newark, Delaware 19713 - Phone: 800-233-1800 / 302-737-7000

EASY LIFT EQUIPMENT WARRANTY POLICY FOR MODELS WITH PREFIXES: ED/ER/EL/ELDR/EG & RCR

Easy Lift Equipment (“ELE”) warrants each new product to be free from factory material and workmanship defects, under normal use with proper maintenance, for a period of 12 months. Warranty coverage for this warranty period is provided by authorized dealers and includes parts. Labor is covered for the same periods of 12 months as outlined above. Please call ELE for the authorized repair dealer in your area.

ELE shall be the sole judge of the validity of any claim or defect and may elect to make any replacement or repair of any part thereof that it has agreed to be defective. Wearable Items such as: hoses, bearings, belts, brushes, seals, lift motors, clamp motors, relays, fuses, springs and wheels are wear items not covered under the warranty policy. ELE assumes no responsibility whatsoever to work done, parts replaced, or expenses incurred not specifically authorized by ELE. Normal maintenance or replacement of service items is not covered by this warranty. No warranty claims will be considered for customers with any delinquent outstanding balance. When batteries, battery chargers, scale printers or scale indicators are purchased from ELE with the equipment, the original manufacturer’s warranty applies.

WARRANTY LIMITATION/DISCLAIMERS:

Easy Lift Equipment reserves the right to void warranty coverage if the unit has been overloaded beyond rated capacity; damaged due to: abuse, misuse, neglect, accidents, freight damage, improper usage, improper repair, and/or improper storage; or any modification or repair conducted in a manner not approved by Easy Lift Equipment. Equipment used in freezers, abrasive, corrosive, and/or excessively moist conditions must be properly equipped for the environment to ensure the warranty is not voided. Warranty questions and claims should be directed to our customer service department. ELE customer service representatives will help you assess and resolve the claim or assist you in contacting the local authorized dealer or representative. The warranty described here shall constitute the sole remedy of the authorized dealer and/or the initial purchaser. ELE neither assumes nor authorizes any person to assume for it any other obligation or responsibility in connection with this product warranty. In no event shall ELE be responsible for direct, indirect, special or consequential damages or any other delay or any economic or commercial loss resulting from Easy Lift Equipment’s performance or non-performance under this warranty. This warranty is expressly in lieu of all warranties, obligations or responsibilities of ELE dealers or other authorized source, expressed, implied or statutory.

SUBMITTING CLAIMS:

To make a claim under this policy, please contact Easy Lift Equipment for assistance. We can be reached by calling 800-233-1800 ext. 4 for customer service or by writing to sales@easylifteqpt.com. Do not return defective parts unless a return authorization (RA) has been provided requesting the return. If requested, we will provide shipping information on how the part should be returned and bear the expense for the return shipping, if the part is proven to be defective. A copy of the work order made at the time of the repair and parts claimed under warranty may be requested for ELE’s inspection.

ORDERING PARTS:

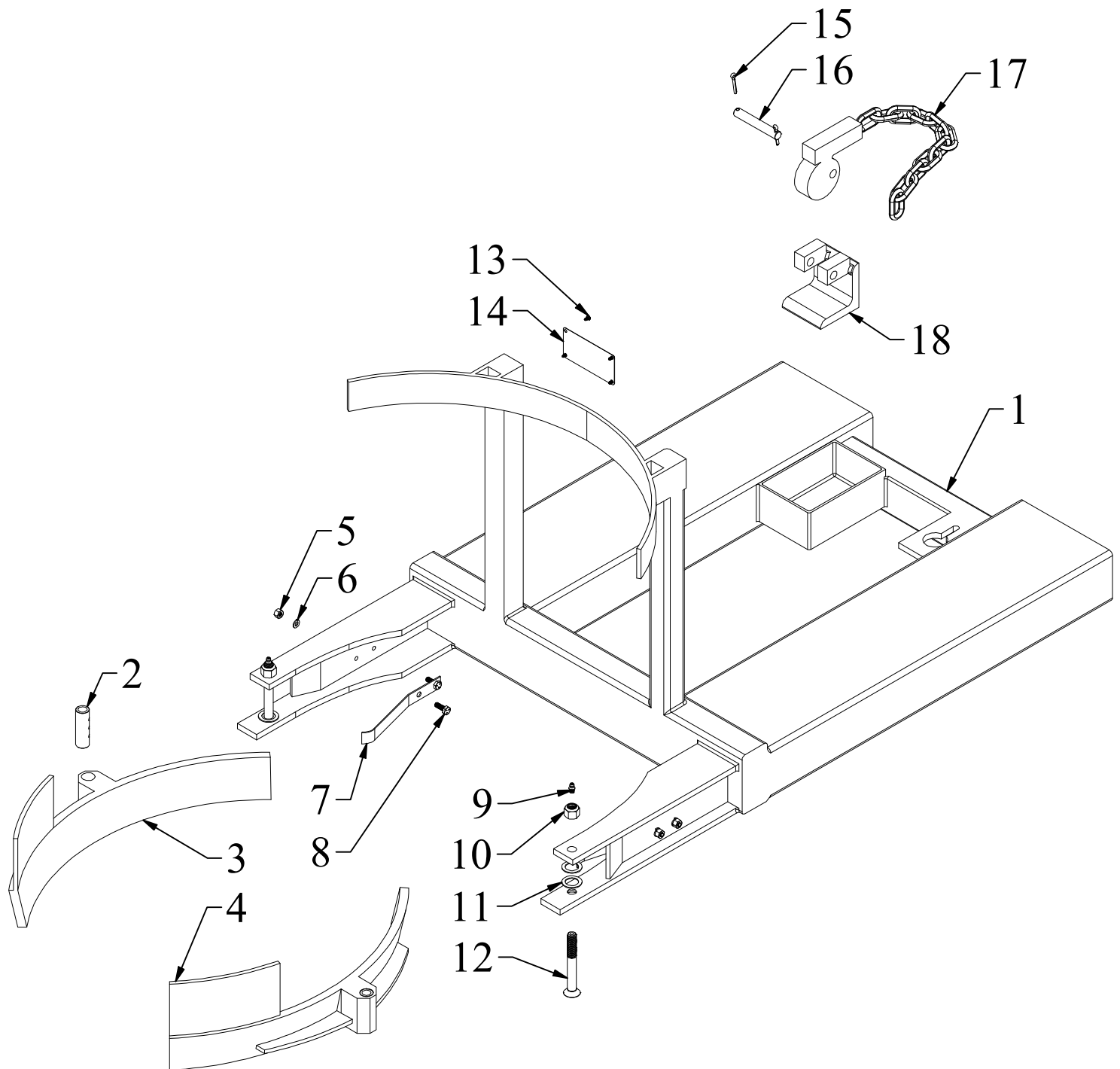
Easy Lift Equipment’s parts are distributed through our customer service department and ship the same day as ordered whenever possible. You will be well taken care of whenever parts, adjustments or repairs are needed. **When contacting ELE, please be sure to state the model and serial number for the equipment.** There is no cost for electronic copies of replacement manuals, parts lists and other general information containing part numbers and nomenclature. Most manuals contain parts pricing, but it is not guaranteed to be valid as parts pricing can change at any time without notice. Any customer service representative can provide timely parts quotations upon request. Adherence to above procedure will save time and provide prompt assistance when it counts. You are of course always welcome to bring to us any questions, comments or recommendations pertaining to your Easy Lift Equipment products.

MANUFACTURER CONTACT INFORMATION:

Easy Lift Equipment Co., Inc.
2 Mill Park Ct.
Newark, DE 19713
Email: sales@easylifteqpt.com

Phone: 800-233-1800: 302-737-7000
Fax: 302-737-7333
Website: www.easylifteqpt.com

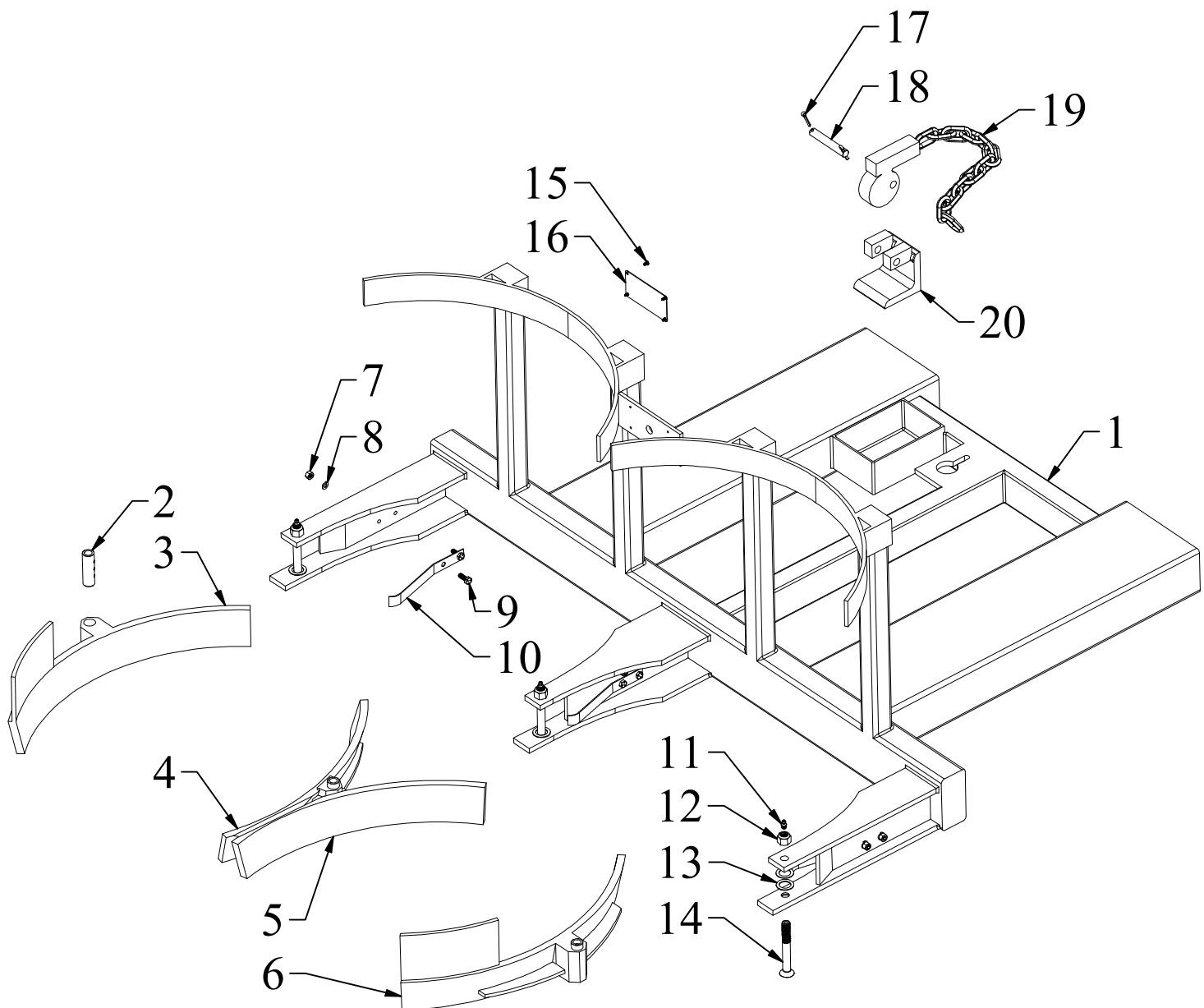
EAGLE-POLY GRIP SINGLE DRUM LIFT TRUCK ATTACHMENT ASSEMBLY



EAGLE-POLY GRIP SINGLE DRUM LIFT TRUCK ATTACHMENT PARTS LIST

<u>ITEM</u>	<u>PART NO.</u>	<u>DESCRIPTION</u>	<u>QTY</u>
1	9311	EPG1 Frame	1
1	9311-SS	Stainless Steel EPG1 Frame	1
2	3535001	1/2" EPG Bushing	2
3	7312R	Outer Right Saddle (from operators perspective)	1
3	7312R-SS	Stainless Steel Outer Right Saddle (from operators perspective)	1
4	7312L	Outer Left Saddle (from operators perspective)	1
4	7312L-SS	Stainless Steel Outer Left Saddle (from operators perspective)	1
5	1/4-20 HN	1/4-20 Finished Hex Nut (zinc)	4
5	1/4-20 HN-SS	1/4-20 Finished Hex Nut (stainless steel)	4
6	1/4 LW	1/4 Lock Washer (zinc)	4
6	1/4 LW-SS	1/4 Lock Washer (stainless steel)	4
7	5406	Flat Spring	2
8	1/4-20 x 3/4 HHCS	1/4-20 x 3/4 Hex Head Cap Screw Grade 5 (zinc)	4
8	1/4-20 x 3/4 HHCS-SS	1/4-20 x 3/4 Hex Head Cap Screw (stainless steel)	4
9	1102K32	Zinc-Plated Steel Grease Fitting with Serrated Shank & Ball Check Valve, 1/4" hole diameter	2
10	1/2-13 NLN	1/2-13 Nylon Locking Nut (zinc)	2
10	1/2-13 NLN-SS	1/2-13 Nylon Locking Nut (Stainless Steel)	2
11	98126A700	Round Shim .048"thick, 3/4"ID, 1-1/8" OD, Stainless Steel	4
12	6316	1/2" 13 UNC x 4 FHHSC Screw	2
13	6 x 1/4 RUDS-SS	6 x 1/4 Round Head U Drive Screw (stainless steel)	4
14	MCL007031	Specification Plate	1
15	6006-CP	Cotter Pin, 5/32" x 1" (zinc)	2
16	4006-1	Pin, Cam Lock	1
17	504	Safety Chain & Cam Lock Assembly	1
18	0504A	Clamp, Cam Lock (zinc)	1

EAGLE-POLY GRIP DOUBLE DRUM LIFT TRUCK ATTACHMENT ASSEMBLY



EAGLE-POLY GRIP DOUBLE DRUM LIFT TRUCK ATTACHMENT PARTS LIST

<u>ITEM</u>	<u>PART NO.</u>	<u>DESCRIPTION</u>	<u>QTY</u>
1	9312	EPG2 Frame	1
1	9312-SS	Stainless Steel EPG2 Frame	1
2	3535001	1/2" EPG Bushing	3
3	7312R	Outer Right Saddle (from operators perspective)	1
3	7312R-SS	Stainless Steel Outer Right Saddle (from operators perspective)	1
4	8312R	Inner Right Saddle (from operators perspective)	1
4	8312R-SS	Stainless Steel Inner Right Saddle (from operators perspective)	1
5	8312L	Inner Left Saddle (from operators perspective)	1
5	8312L-SS	Stainless Steel Inner Left Saddle (from operators perspective)	1
6	7312L	Outer Left Saddle (from operators perspective)	1
6	7312L-SS	Stainless Steel Outer Left Saddle (from operators perspective)	1
7	1/4-20 HN	1/4-20 Finished Hex Nut (zinc)	8
7	1/4-20 HN-SS	1/4-20 Finished Hex Nut (stainless steel)	8
8	1/4 LW	1/4 Lock Washer (zinc)	8
8	1/4 LW-SS	1/4 Lock Washer (stainless steel)	8
9	1/4-20 x 3/4 HHCS	1/4-20 x 3/4 Hex Head Cap Screw Grade 5 (zinc)	8
9	1/4-20 x 3/4 HHCS-SS	1/4-20 x 3/4 Hex Head Cap Screw (stainless steel)	8
10	5406	Flat Spring	4
11	1102K32	Zinc-Plated Steel Grease Fitting with Serrated Shank & Ball Check Valve, 1/4" hole dian	3
12	1/2-13 NLN	1/2-13 Nylon Locking Nut (zinc)	3
12	1/2-13 NLN-SS	1/2-13 Nylon Locking Nut (Stainless Steel)	3
13	98126A700	Round Shim .048"thick, 3/4"ID, 1-1/8" OD, Stainless Steel	6
14	6316	1/2" 13 UNC x 4 FHHSC Screw	3
15	6 x 1/4 RUDS-SS	6 x 1/4 Round Head U Drive Screw (stainless steel)	4
16	MCL007031	Specifiction Plate	1
17	6006-CP	Cotter Pin, 5/32" x 1" (zinc)	2
18	4006-1	Pin, Cam Lock	1
19	504	Safety Chain & Cam Lock Assembly	1
20	0504A	Clamp, Cam Lock (zinc)	1