

*Easy Lift Equipment Co., Inc.*

2 Mill Park Ct, Newark, Delaware 19713 - Phone: 800-233-1800 / 302-737-7000

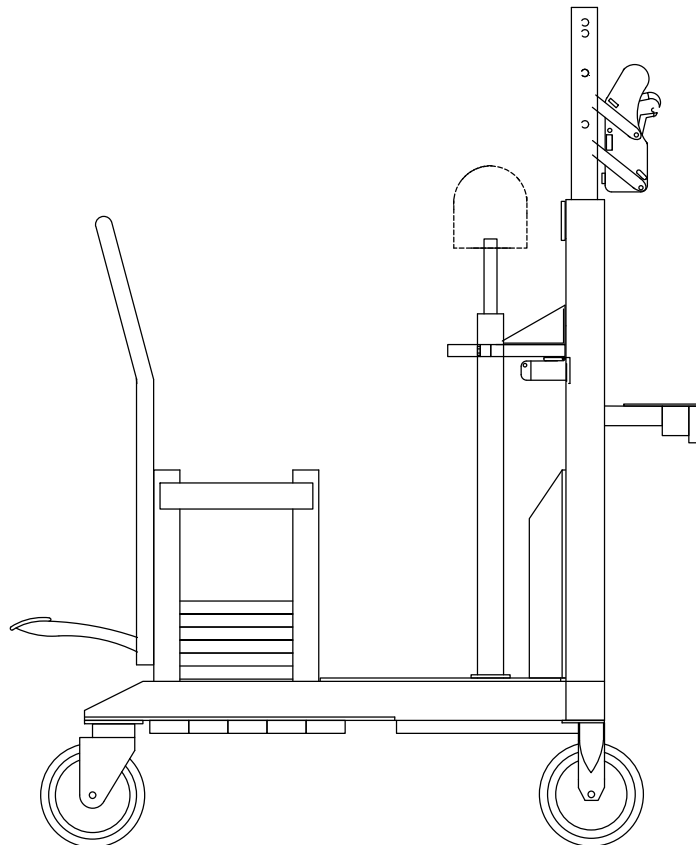
OPERATION/ MAINTENANCE

INSTRUCTIONS

FOR

EASY LIFT ERGONOMIC  
DRUM TRANSPORTER

Model EL100CB to EL800CB



THIS PAGE INTENTIONALLY LEFT BLANK

## INTRODUCTION

The Counter-Balanced Drum transporter is designed for lifting and moving drums/barrels in a wide variety of industrial settings. It can be used for loading and unloading of drums from conventional wood pallets, containment or spill pallets, cabinets, air piston pumps, and platform scales. The units vary in capacity up to 800 lbs. An assortment of options and modifications to suite the customers needs are also available.

This manual contains information to acquaint you with the safe and proper use and upkeep of the counter-balanced drum transporter and should be available to personnel working with the unit. Before operating this unit, read and understand this entire section to become familiar with the unit.

**WARNING: Do not install, operate or service this product unless you have read and understand the safety practices, warnings, and operation and service instructions contained in his manual. failure to do so may result in personal injury and property damage.**

## SAFETY PRACTICES

1. Be certain that the drum load weighs no more than the unit's maximum rated capacity.
2. Do not transport drum at the maximum lifting height when moving the unit under load. See that mast is lowered so the drum has only the necessary floor clearance.
3. Keep hands or feet away from under the bottom of the drum during operation.
4. Do not use the unit on inclined floors with a slope of more than 5 degrees. Consult your supervisor if you are unsure of this requirement.
5. Keep hands or other objects clear of clamping head and mast during operation.
6. Never remove counterweights from unit as they may tip the unit forward when lifting a drum. Consult factory if a lesser capacity is desired.

## COUNTER-BALANCED DRUM TRANSPORTER OPERATING INSTRUCTIONS

This unit incorporates the use of an automatic positive clamping mechanism. Clamping jaws will grab or release the drum automatically when raising or lowering the clamping head on a drum.

The unit is designed to handle a wide variety of rimmed drums with different heights. The clamping head is pin-mounted on the mast. There are six adjustment holes on the inner mast. The height of the clamping head can be adjusted by positioning in different adjustment holes based on the height of the drums. Units shipped are shipped set to pick up 35" high standard 55 gallon drums.

1. Remove all packing materials, protective strapping and wood blocks used for shipping. Before using, open the breather screw on the hydraulic cylinder to prevent airlock.
2. To lift a drum, push the unit toward the drum until the clamping head contacts firmly against the drum sidewall. If desired, the unit can be secured in this position by engaging the floor lock. Raise the clamping head by stepping on the pump pedal located on the right, back side of the unit. The jaws will automatically grab the top chime when raising the clamping head. The drum will be lifted up with further pumping. **WARNING: Do not attempt to overload the unit beyond its rated capacity, or raise the drum beyond its maximum lifting height.**
3. To transport a drum, disengage floor lock first, if applicable. Adjust the height the drum to approximately 2 or 3 inches above the floor. **WARNING: Never move the drum at its maximum lifting height.** Then push or pull the unit to the desired location. **WARNING: Never leave the loaded unit without applying floor lock. Doing so may cause the unit to roll by itself and cause property damage or personal injury. WARNING: Never operate the unit on an inclined floor with a slope of more than 5 degrees.**
4. To disengage the drum, use your foot to gently depress the release valve pedal on the left, back side of the unit. The clamping jaws will retract automatically when the drum sits on the floor or a pallet. Simply pull the unit away to free it from the drum. **WARNING: never press the release valve pedal too hard. It may cause the drum to fall too fast and damage the drum.**
5. To adjust the clamping head to a different adjustment hole. Use one hand to hold the clamping head and use other hand to pull out the L-shaped adjusting pin. Slide the head up or down to the desired height and put pins back securely in place.

## MAINTENANCE INSTRUCTIONS

1. Before every usage, check that all springs, pins, casters, lift chain and its anchors are in good working order and hydraulic jack works properly without leakage. **WARNING: Do not operate the unit if any part is missing or in poor condition, as this will directly affect the performance of the unit.**
2. On a monthly basis, spray light grade oil on moving parts in the clamping mechanism to ensure smooth operation. It is recommended to keep the clamping mechanism well oiled and free from foreign materials which may impede proper operation of jaws and springs. The DARCOR wheels equipped on this unit have precision sealed ball bearings and require no lubrication. **WARNING: Do not leave the unit outside in rain, snow, etc., for extended periods.**
3. For heavy usage of the unit, it is recommended to replace all springs, hydraulic oil and sealing components of the hydraulic cylinder once each year to ensure that the unit maintains a longer working life.

## COUNTER-BALANCED WEIGHT CAPACITY CHART

<u>CAPACITY</u>	<u># OF WEIGHTS</u>	<u>MACHINE WEIGHT</u>
800	30	1040
700	26	980
600	22	913
500	16	814
400	12	747
300	6	647
200	0	548
100	0	548

# EasyLift Ergonomic Drum Transporter with EG Single Clamping Mechanism for use on Fiber Drums

## IMPORTANT NOTE FOR HANDLING FIBER DRUMS



Raise the clamping mechanism until the lower jaw is just high enough to contact the metal skirt just below the locking band.



Then move the transporter forward so the lower jaw contacts the metal skirt under the drums locking band and continue to elevate the drum upward.



Do not allow the lower jaw to make contact with the paper portion of the fiber drum when trying to elevate the drum.

### IMPORTANT:

It is important that the lower jaw does not contact the paper portion of the drum when raising the drum. Keep the lower jaw away from the paper portion of the drum until the lower jaw of the clamping mechanism is high enough to contact the metal skirt below the locking band. Then push the transporter forward to contact the skirt and continue to elevate the clamping mechanism. If the lower jaw contacts the paper portion of the drum when elevating the drum, the clamping mechanism will attempt to clamp the drum in this position and miss or tear the skirt. If this is done incorrectly, lower the clamp and try again. The clamping mechanism can also grip the drum without the lid and locking band.

# EASY LIFT EQUIPMENT CO., INC

## WARRANTY POLICY

**Easy Lift Equipment** warrants its products to the original purchaser to be free from factory material and workmanship defects. All warranties begin on the date of delivery to a customer's location for a period of 1 year. Defective parts or components may be required to be returned freight prepaid should a return authorization be issued. Easy Lift Equipment shall be the sole judge of the validity of any claim or defect and may elect to make any replacement or repair of any part thereof that it has agreed is defective. Wearable Items: Such as hoses, bearings, brushes, seals and wheels shall be warranted for a period of 90 days. Labor coverage is limited to 90 days at the rate of \$ 50.00 per hour. Travel time and mileage are not covered under this warranty.

Easy Lift Equipment Co., Inc. assumes no liability whatsoever to work done, parts replaced, or expenses incurred not specifically authorized by it. Normal maintenance or replacement of service items is not covered by this warranty. No warranty claims will be considered to customers with any delinquent outstanding balance.

The warranty described here above shall constitute the sole remedy of the dealer and/or the initial purchaser. Easy Lift Equipment Co., Inc., shall under no circumstances be liable for special, general incidental or consequential damages.

To make a claim under this guarantee, send a completed warranty claim to Easy Lift Equipment for consideration. Do not return defective parts unless a return authorization (RA) has been sent requesting for return.

### **WARRANTY LIMITATION:**

Easy Lift Equipment Co., Inc. reserves the right to void warranty coverage if the unit has been overloaded beyond capacity limitation, damaged due to abuse, neglect, freight damage or that have been modified or repaired in any manner not approved by Easy Lift Equipment. Units used in abrasive or corrosive conditions, in freezers or excessive moisture, must be properly equipped for the environment to assure the warranty is not voided.

When batteries, battery chargers or scale indicators are purchased from Easy Lift Equipment, the original manufacturer's warranty applies. Warranty service and claims should be directed to the local representative of the original manufacturer in your area or we will assist the customer in locating a local service representative in their area.

### **SUBMITTING CLAIMS:**

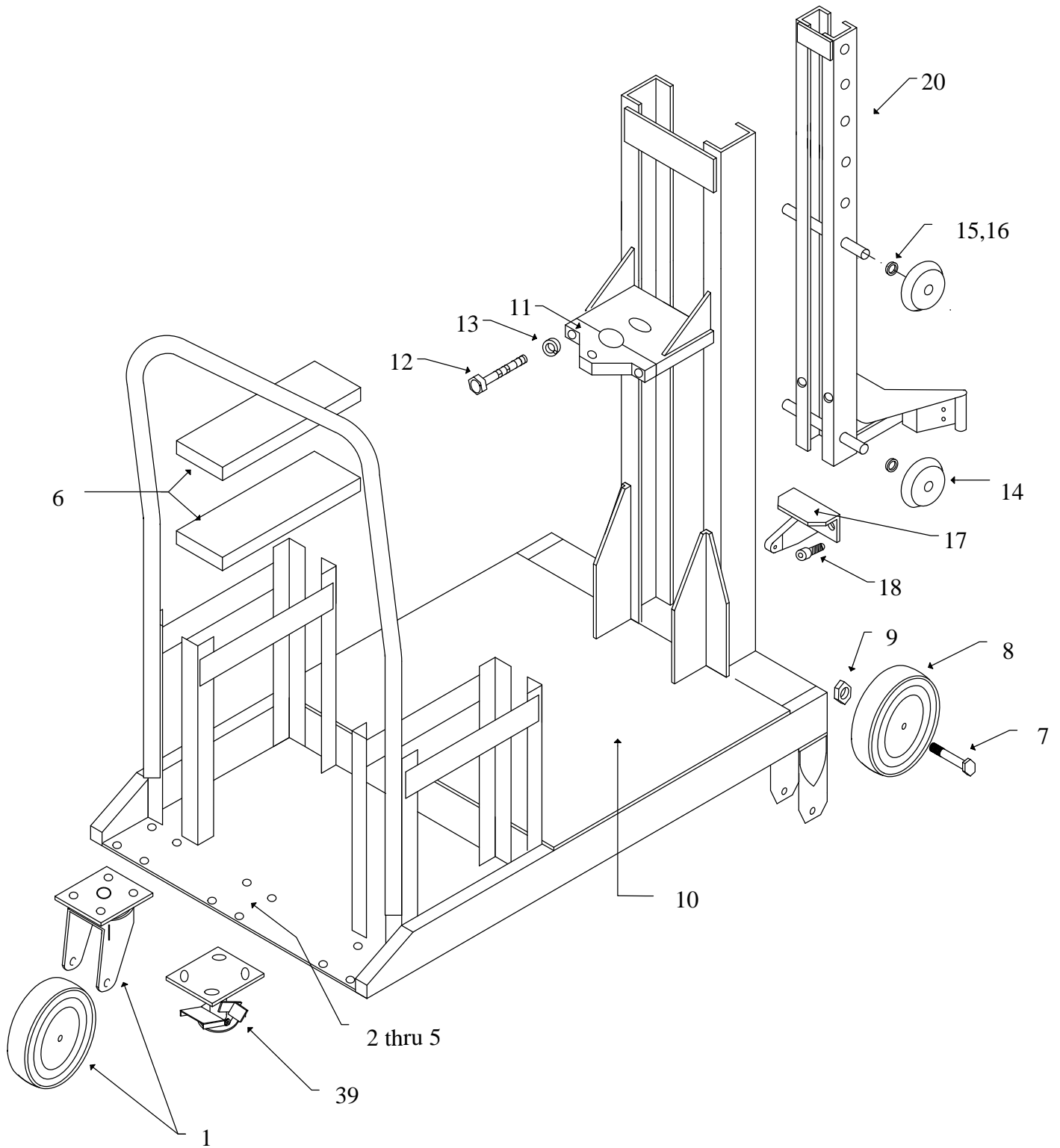
If failure occurs an Easy Lift Equipment claim form must be submitted to Easy Lift Equipment within (30) thirty days of the completion of repair. Claim forms are available by calling 800-233-1800, faxing to 302-737-7333 or by writing to sales@easylifteqpt.com. A copy of the work order made at the time of the repair and parts claimed under warranty may be requested for Easy Lift Equipment's inspection. Do not send defective parts to Easy Lift unless requested.

### **ORDERING PARTS:**

EasyLift™ products are distributed through a sales and service organization that is eager and capable to service the equipment it has sold. You will be well taken care of whenever parts, adjustments or repairs are needed. **When contacting Easy Lift Equipment, please be sure to state Model No. and Serial No. for the equipment and use part numbers and nomenclature as shown in parts listing.** Adherence to above procedure will save time and provide speedy assistance when it counts. You are of course always welcome to bring to us any questions, comments or recommendations pertaining to your EasyLift™ products.

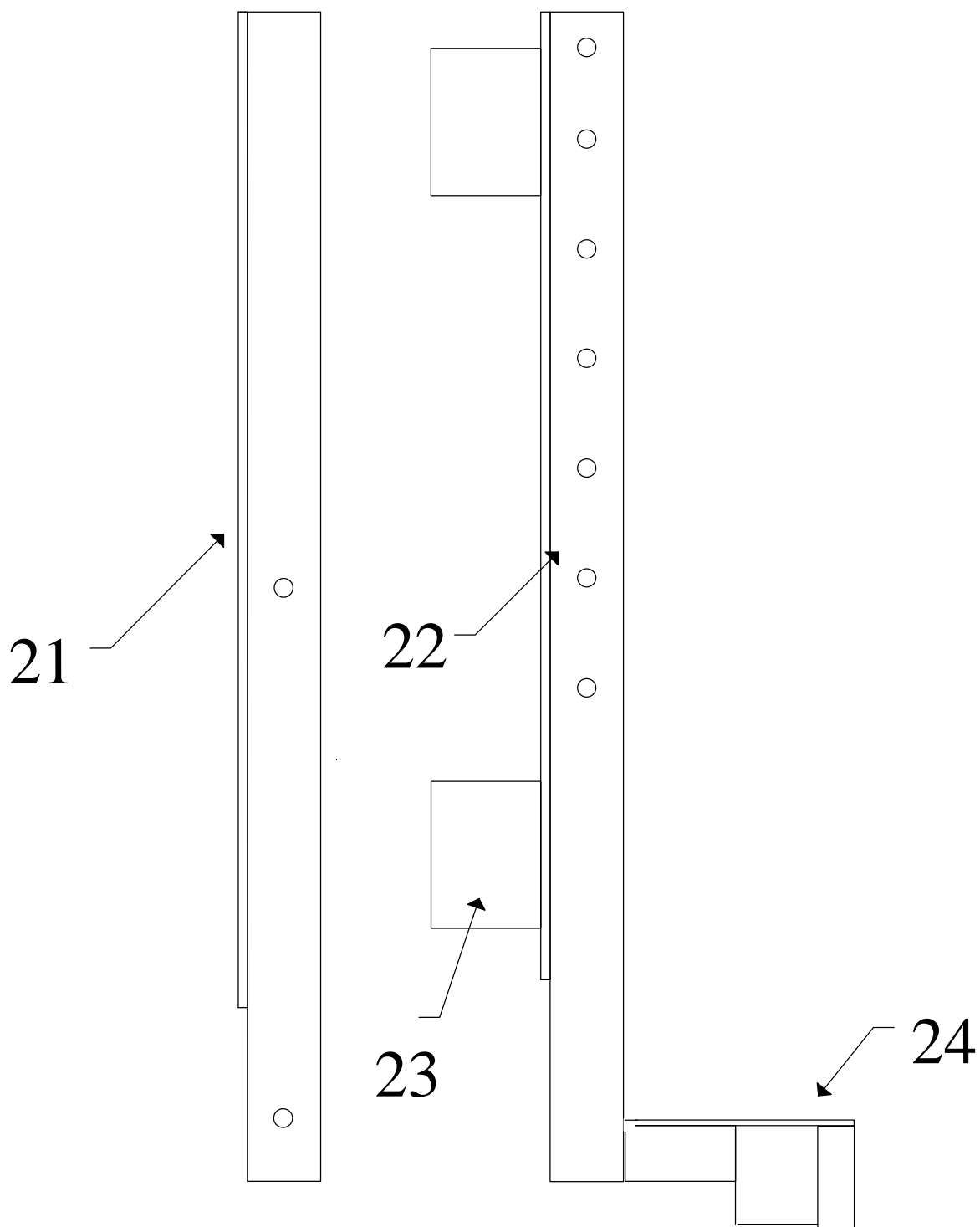
Easy Lift Equipment Co., Inc.  
2 Mill Park Ct.  
Newark, De.19713  
(p) 1-800-233-1800  
(f ) 1-302-737-7333  
[sales@easylifteqpt.com](mailto:sales@easylifteqpt.com)

# COUNTERBALANCE FRAME PARTS

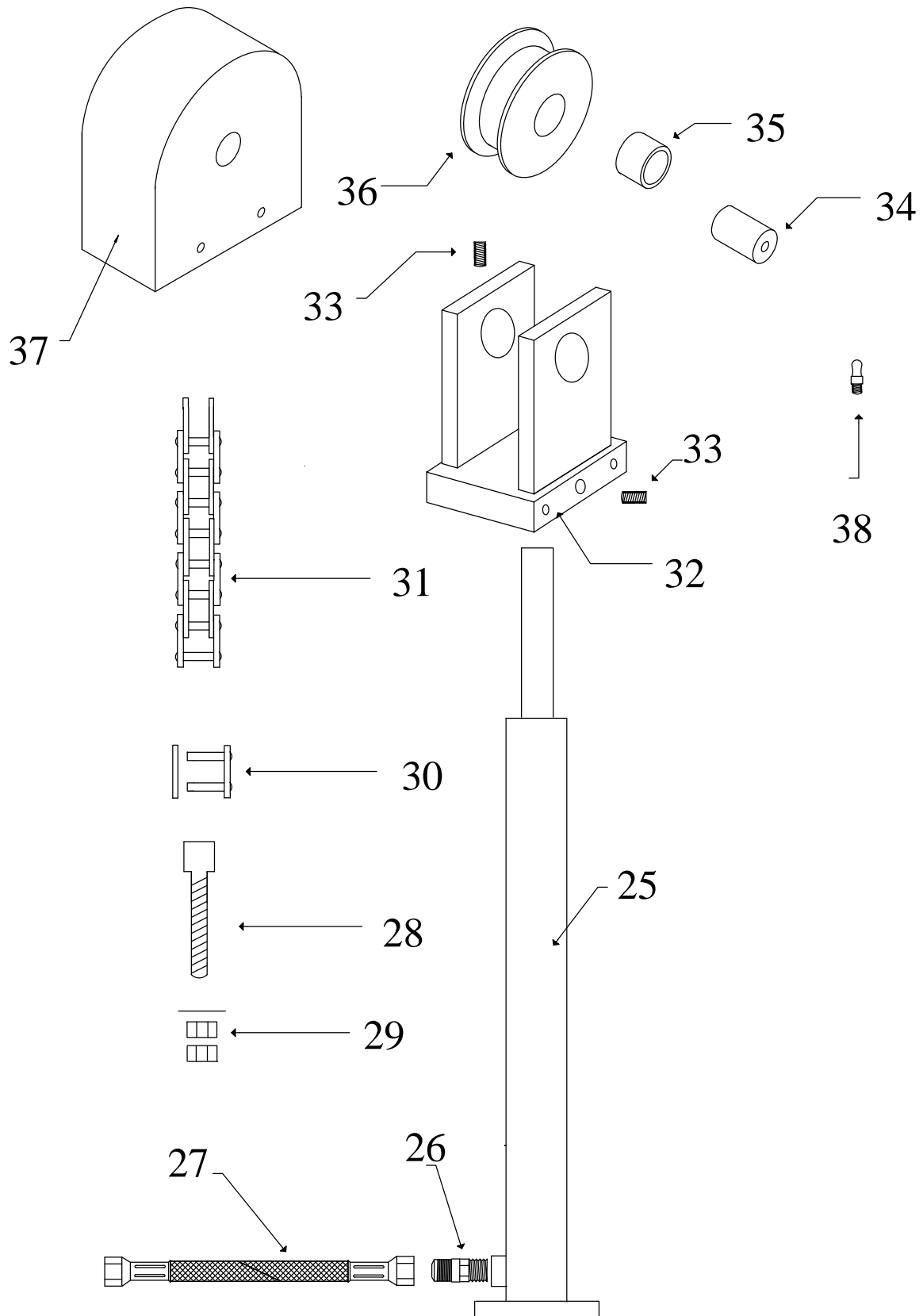




# COUNTERBALANCE SCALE MASTS

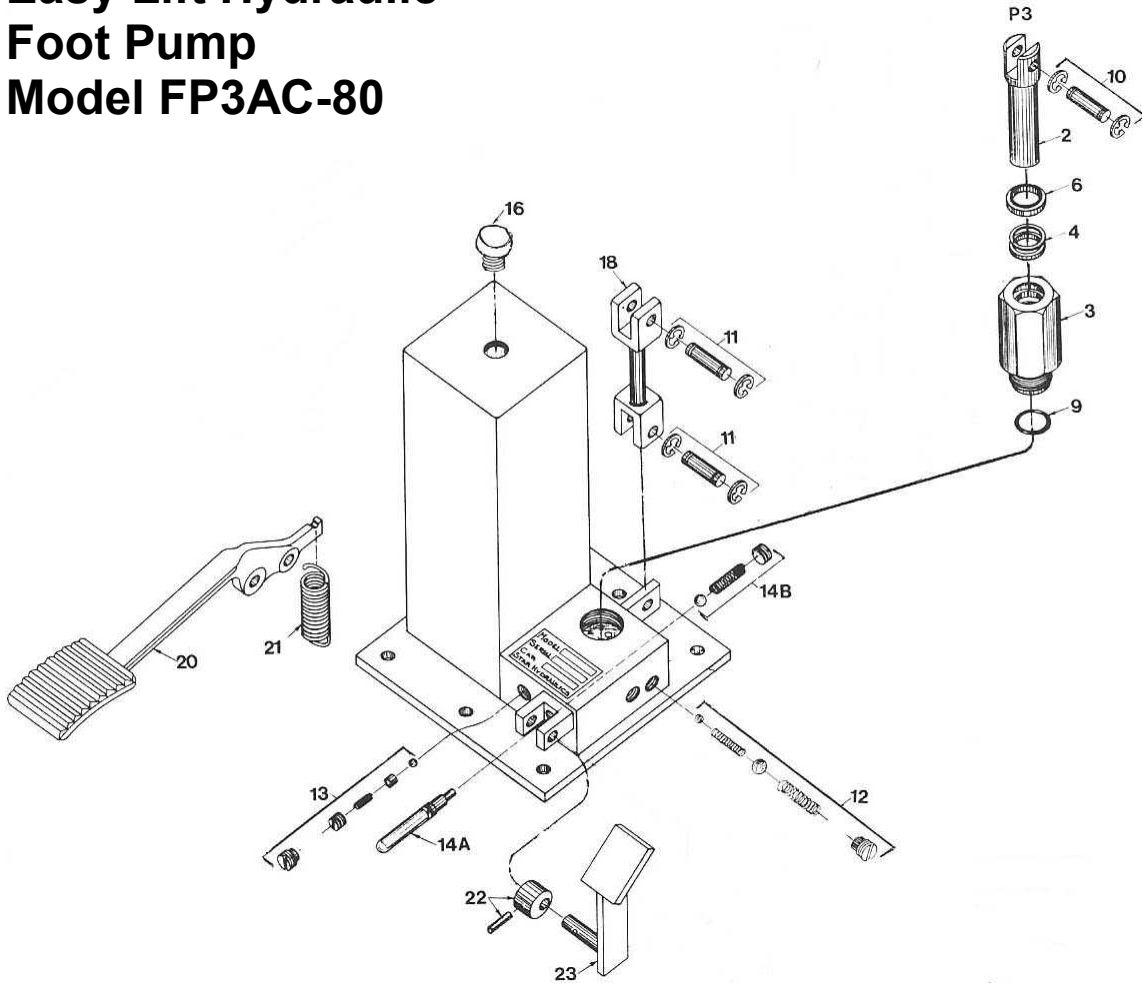


# COUNTERBALANCE HYDRAULIC LIFT CYLINDER





# Parts List for: Easy Lift Hydraulic Foot Pump Model FP3AC-80

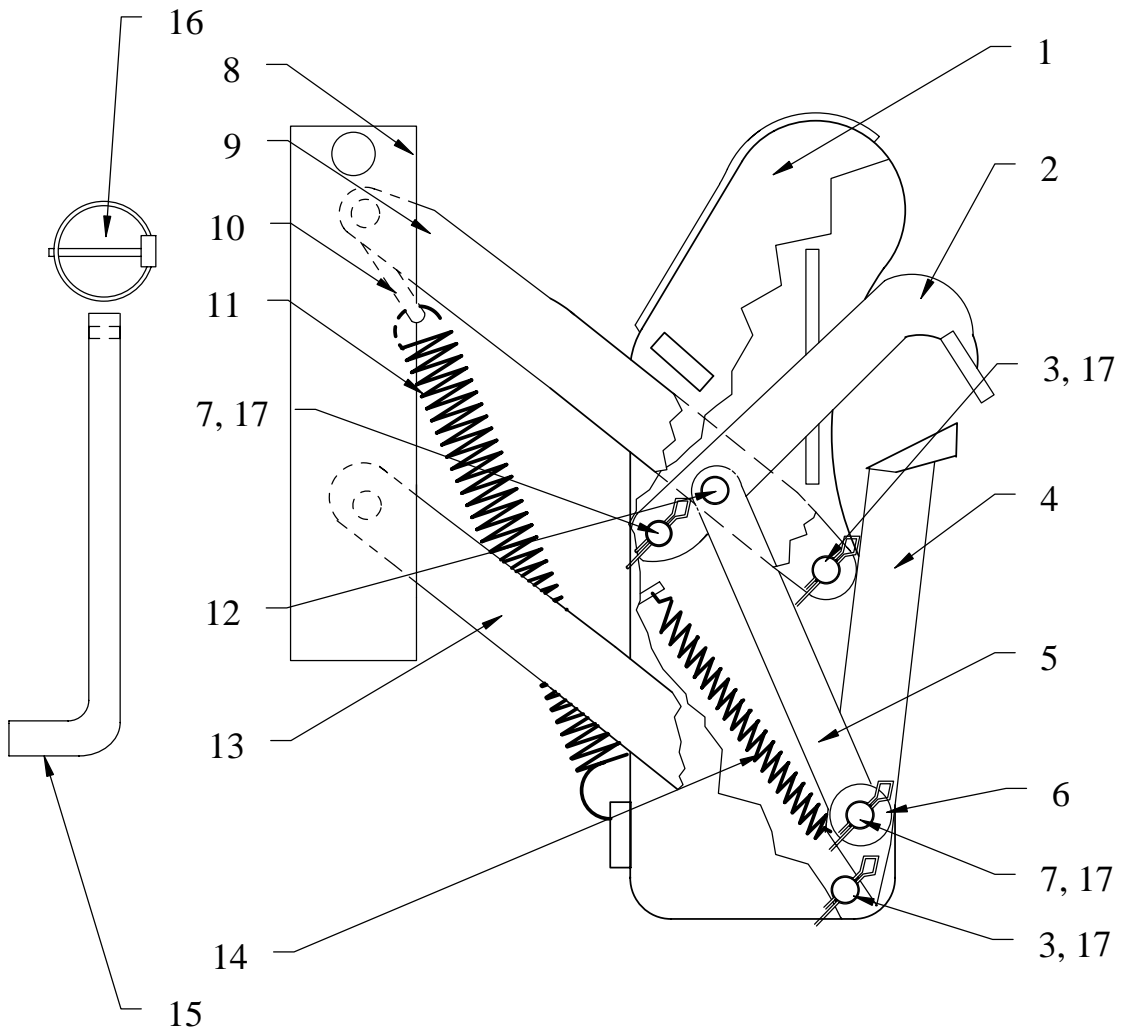


Item No.	Part Name	Part No.
	Repair Kit (includes items *)	P3AC-RK
2	Piston	P3-2
3	Piston Barrel	P3-3
4	Piston Packing	P3-4*
6	Packing Wiper	P3-6*
9	Pump Barrel Seal	P1-20*
10	Piston Pin (incl. rings)	CP13-10RP
11	Link Pin (incl. rings)	CP13-10RP
12	Pump Valve (complete)	P1-12RP*
13	Overload Valve (complete)	P3-13RP*

Item No.	Part Name	Part No.
14A	Release Plunger (complete)	CP13-17RP*
14B	Release Valve (complete)	PAC-18RP*
16	Breather Screw	P1-16
18	Pump Link	CP13-12
20	Foot Lever	FP12-9
21	Lever Return Spring	FCP13-23
22	Release Lever Pin And Cam	FCP13-13RP
23	Foot Release Lever	FCP13-14

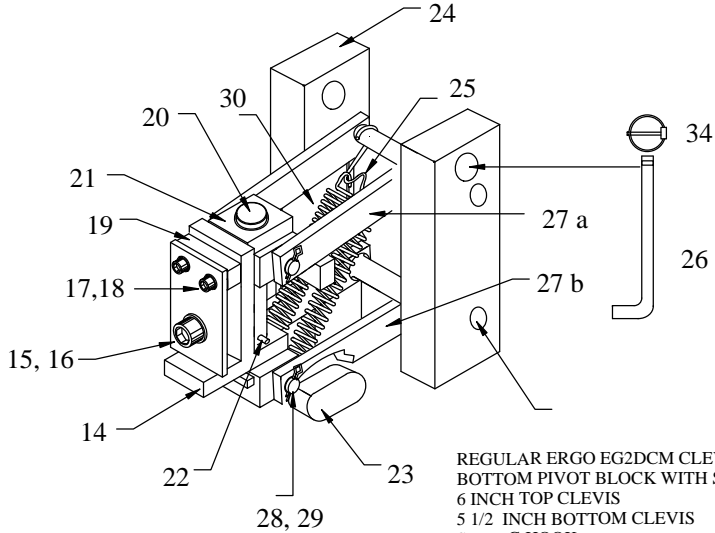


ERGO CLAMP MECHANISM - Part List  
EASY LIFT EQUIPMENT INC.

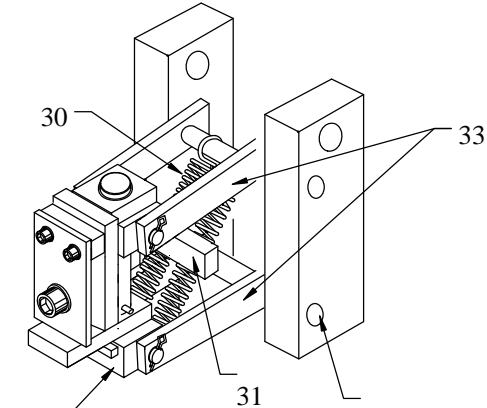
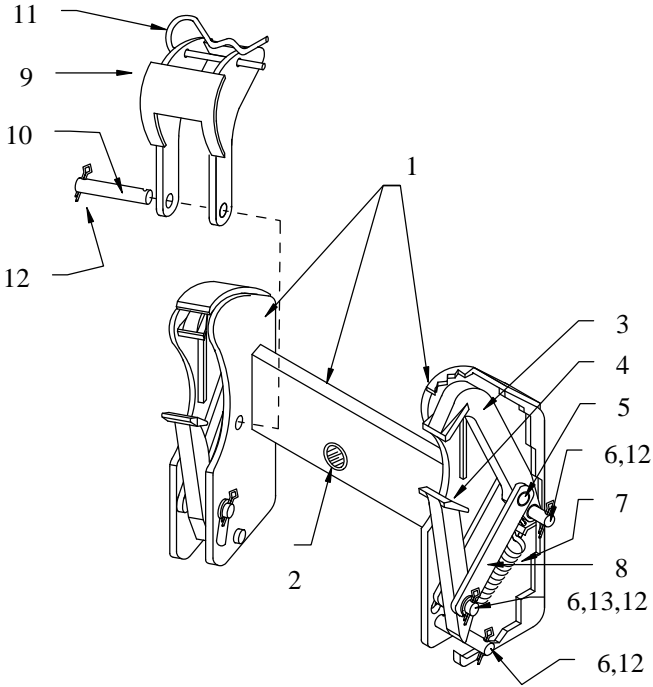




# ERGO EG2DCM CLAMPING MECHANISM



REGULAR ERGO EG2DCM CLEVIS SET USES :  
 BOTTOM PIVOT BLOCK WITH STOPS  
 6 INCH TOP CLEVIS  
 5 1/2 INCH BOTTOM CLEVIS  
 SPRING HOOK  
 CLEVIS SLIDES MUST BE INSTALLED WITH HOLES TO REAR



SCALE ERGO EG2DCM CLEVIS SET USES:  
 TOP PIVOT BLOCK WITH STOP BAR  
 3 INCH TOP & BOTTOM CLEVISES  
 NO SPRING HOOK  
 SLIDES MUST BE INSTALLED WITH CLEVIS HOLES FORWARD



