

Easy Lift Equipment Co., Inc.

2 Mill Park Court, Newark, Delaware 19713 - Phone: 800-233-1800 / 302-737-7000



**EASYLIFT DRUM TRANSPORTERS
FOR LIFTING, TRANSPORTING & WEIGHING DRUMS**



EASYLIFT DRUM TRANSPORTERS

Contents

EasyLift Economy (ELE) Drum Transporters.....	3
EasyLift Ergonomic (EL) Drum Transporters.....	4
EasyLift Narrow (SL) Aisle Drum Transporters	5
EasyLift Counterbalance (CB) Drum Transporters	6
EasyLift Keg Transporter (ELK)	7
EasyLift Empty Drum Stacker (EL10072DC).....	7
Alternate Clamping Options	8
EG1 Single Clamping Mechanism	8
EG2L Double Clamping Mechanism	8
Additional Options	8-10
Scale System and/or Printer	8
FDA Compliant Metallic Gray Powder Coating.....	9
Stainless-Steel Construction Models.....	9
Increased Lift Heights	9
Fixed or Folding Jibs.....	10
Hand Brake.....	10
Exchangeable Battery Option	11

EasyLift Drum Transporters are the safe and ergonomic solution for picking, transporting, and weighing a wide range of steel, plastic, and fiber-chimed drums. Ergonomic drum transporters help eliminate workplace injuries associated with moving drums manually. We offer many model configurations to suite a wide range of customer applications, budgets, environments, and capacity requirements. These drum transporters (except for the Economy model) feature high quality Darcor casters, which help decrease the push and pull forces involved with moving heavy drums. Optional scale systems are also available, for both intrinsically safe and non-intrinsically safe areas, for verifying weight and performing inventory.

**EASY LIFT EQUIPMENT., INC. IS AN
ISO 9001: 2015 CERTIFIED COMPANY**



Easy Lift Equipment, Inc.
2 Mill Park Ct.
Newark, DE. 19713
800-233-1800
or 302-737-7000
Fax: 302-737-7333
Email: sales@easylifteqpt.com
www.easylifteqpt.com

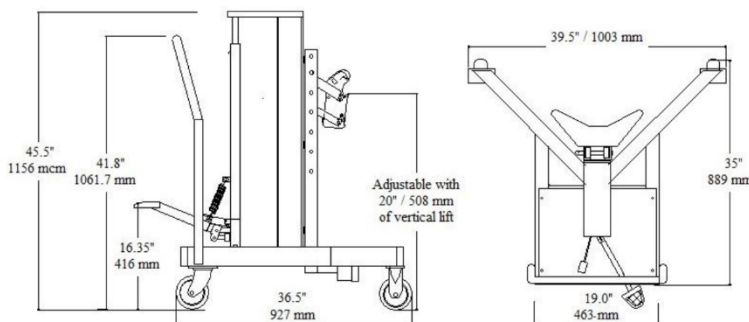


ISO 9001: 2015 Certified Company

EASYLIFT ECONOMY (ELE) DRUM TRANSPORTERS

EASYLIFT ECONOMY DRUM TRANSPORTERS, known as ELE800, are the safest and most economical solution for picking and transporting drums from the floor or the corner of a pallet. It features a fixed straddle leg base frame, an 800-pound capacity, and can lift a wide range of steel, plastic, and fiber chimed drum up to 20" above floor level. The direct lift concept of the hydraulic cylinder to the load being lifted requires minimal foot pounds applied to the lift pedal. The smaller release pedal is pressure sensitive to provide a controlled decent when lowering a drum. The 5" x 2" casters are equipped with a lever lock to keep the unit from rolling when not in use. 8" wheels are also available. The ELE800 comes standard with the EG1 single clamping mechanism, but the EG2L double clamping mechanism is also available and is recommended for working with open top drums, plastic, or fiber chimed drums. Both clamping mechanisms are fully adjustable on the mast for shorter height drums. The ELE800 is virtually maintenance free and is backed by a 12-month warranty. The ELE800 is finished in a safety yellow powder coating for durability. For food and pharmaceutical applications, the ELE800 is also available in an FDA compliant metallic grey powder coating with a spark resistant clamp, anti-static grounding strap and a rubber belt.

30-DAY FREE TRIAL TOWARD PURCHASE PROGRAM FOR FIRST TIME BUYERS



SPECIFICATIONS

Capacity: 800 lbs. (363 kg)
Weight: 325 lbs. (147 kg)
Drum Lift Height: 20" (50.8 cm)
Length: 35" (88.9 cm)
Width: 39.5" (100.3 cm)
Lowered Height: 45.5" (115.6 cm)

EASYLIFT ERGONOMIC (EL) DRUM TRANSPORTERS

EASYLIFT ERGONOMIC DRUM TRANSPORTERS are designed to reduce the risks of operator injuries associated with manhandling drums. Easy to use by all operators while increasing worker productivity with moving drums on or off pallets, floor scales, conveyors, and spill containment pallets. Ergonomic models can safely handle a steel or plastic chimed drum with our Eagle-Grip® 1 Single Clamping Mechanism. The EG2L double clamping mechanism is also available and can grip most steel, plastic, and fiber drums as well, but is recommended when handling very heavy plastic or fiber chimed or steel drums with the lids removed. Both the EG1 & EG2L are also available in spark resistant stainless-steel. Ergonomic models are virtually maintenance free and finished in a safety yellow powder coating for durability. FDA compliant metallic gray powder coating as well as full 304 stainless steel construction are also available for food and pharmaceutical applications. Capacities from 400 to 800 lbs. (181 to 363 kgs) or 600 to 1,000 lbs. (272 to 454 kgs) are available by means of adjustable legs. Available lift power configurations include manual foot pump, DC powered and air powered.



Foot Pump Lift. A convenient foot pedal ensures both easy lifting and lowering of a drum at up to 1" (2.54 cm) per full stroke. A stainless-steel spark resistant clamping option is also available which includes an EG1SRC clamp, anti-static grounding strap and a rubber belt which supports the lower side of the drum.



DC Powered Lift. With fully charged batteries this model will lift & lower a 600 lb. (272 kg) drum, 8" (203 kg) above the floor, approximately 786 times before the batteries are totally discharged. An **exchangeable battery option** is now available for high volume applications or around the clock operations and eliminates charging downtime.



Air Powered Lift. Recharged at 120 psi, a 600 lb. (272 kg) drum can be lifted 10" (2.54 cm) then lowered approx. 20 times per charge. An airline can remain connected for consistent use. Comes standard with the EG1 spark resistant clamp, an anti-static grounding strap and a rubber belt which supports the lower side of the drum.

EASYLIFT ERGONOMIC DRUM TRANSPORTERS are designed to pick and place drums from the corner of a standard pallet.



SPECIFICATIONS

Capacity:

400 to 1,000 lbs. (181.5 to 454 kgs)

Weight: 350 lbs. (159 kg)

Drum Lift Height: 20" (50.8 cm)

Length: 37.5" (95.3 cm)

Width: *35.5" (90.2 cm)

to 44.5" (113 cm)

*Contingent on equipment configuration.

Lowered Height: 54.5" (138.4 cm)

30-DAY FREE TRIAL TOWARDS PURCHASE PROGRAM FOR FIRST TIME BUYERS.

EASYLIFT NARROW (SL) AISLE DRUM TRANSPORTERS

EASYLIFT NARROW AISLE DRUM TRANSPORTERS are designed to reduce the risks of operator injuries associated with manhandling drums. Narrow Aisle Drum Transporters feature a narrow 27.5" (69.9 cm) overall width for moving drums on or off pallets, floor scales, conveyors, and spill containment pallets. The compact design allows the operator to easily maneuvering the equipment through standard doorways and in tight aisles. These units can pick or place drums to and from the corner of a standard pallet and are also capable of handling drums nestled tightly together in a row. Narrow Aisle models are available in capacities of 300, 600 or 800 lbs. (136, 272 or 363 kgs) contingent on equipment configuration. Narrow Aisle models can safely handle a steel or plastic chimed drum with our Eagle-Grip® 1 Single Clamping Mechanism. The EG2L double clamping mechanism is recommended when handling very heavy plastic drums or steel and fiber chimed drums with the lids removed. Both the EG1 & EG2L are also available in spark resistant stainless-steel. Narrow Aisle models are virtually maintenance free and finished in a safety yellow powder coating for durability. FDA compliant metallic gray powder coating as well as full 304 stainless steel construction are also available for food and pharmaceutical applications. Available lift power configurations include manual foot pump, DC powered and air powered.



Foot Pump Lift. A convenient foot pedal ensures both easy lifting and lowering of drums at up to .75" (1.91 cm) per full stroke. A stainless-steel spark resistant clamping option is also available which includes an EG1SRC clamp, anti-static grounding strap and a rubber belt which supports the lower side of the drum.



DC Powered Lift. With fully charged batteries, this model will lift & lower a 600 lb. (272 kg) drum, 8" (20.3 cm) above the floor, approximately 786 times before the batteries are totally discharged. An **exchangeable battery option** is now available for high volume applications or around the clock operations and eliminates charging downtime.

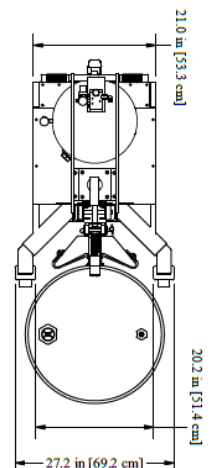


Air Powered Lift. Recharged at 120 psi, a 600 lb. (272 kg) drum can be lifted 10" (2.54 cm) then lowered approx. 20 times per charge. An airline can remain connected for consistent use. Comes standard with the EG1 spark resistant clamp, an anti-static grounding strap and a rubber belt which supports the lower side of the drum.



SPECIFICATIONS

Capacity: 300, 600 or 800 lbs.
(136, 272 or 363 kgs)
Weight: 540 lbs. (245 kg)
Drum Lift Height: 20" (50.8 cm)
Length: 38.8" (98.6 cm)
Width: *Approximately 27.5" (69.9 cm)
*Equipment width varies
by unit capacity.
Lowered Height: 54.5" (138.4 cm)



EASYLIFT COUNTERBALANCE (CB) DRUM TRANSPORTERS

EASYLIFT COUNTERBALANCE DRUM TRANSPORTERS are designed to eliminate the legs forward of the clamp and compensate the lack of legs with counterweights, making this model ideal for picking or placing drums in cabinets, under air piston pumps, or onto scales, or pallets where side access is necessary. Providing approximately 4.25" (10.8 cm) of reach forward of the front casters with the EG1 Single Clamping Mechanism and approximately 3.25" (8.3 cm) with the EG2L Double Clamping Mechanism. Capacity available from 400 to 800 lbs. (181 to 363 kgs) contingent on total weights used. All models provide a minimum of 20" (50.8 cm) of lift height above floor level. Optional 40" (101.6 cm) and 60" (152.4 cm) lift models are also available for double or triple stacking drums. Counterbalance models can safely handle a steel or plastic chimed drum with our Eagle-Grip® 1 Single Clamping Mechanism. The EG2L double clamping mechanism is recommended when handling very heavy plastic drums or steel and fiber chimed drums with the lids removed. Both the EG1 & EG2L are also available in spark resistant stainless-steel. FDA compliant metallic gray powder coating as well as full 304 stainless steel construction are also available for food and pharmaceutical applications. Available lift power configurations include manual foot pump, DC powered and air powered.

30-DAY FREE TRIAL TOWARDS PURCHASE PROGRAM FOR FIRST TIME BUYERS.



Foot Pump Lift. A convenient foot pedal ensures both easy lifting & lowering of a drum at up to 1" (2.5 cm) per stroke. A stainless-steel spark resistant clamping option is also available which includes an EG1SRC clamp, anti-static grounding strap and a rubber belt which supports the lower side of the drum.



DC Powered Lift. With fully charged batteries, this model will lift & lower a 600 lb. (272 kg) drum, 8" (20.3 cm) above the floor, approximately 786 times before the batteries are totally discharged. An **exchangeable battery option** is now available for high volume applications or around the clock operations and eliminates charging downtime.



Air Powered Lift, recharged at 120 psi, a 600 lb. drum can be lifted 10" then lowered approx. 20 times per charge. An airline can remain connected for consistent use. Comes standard with the EG1 spark resistant clamp option, anti-static grounding strap and rubber belt.

SPECIFICATIONS

Capacity: 400, 600 or 800 lbs.

(181.4, 272 or 363 kgs)

Weight: *Approx. 1,000 lbs. (453.6 kg)

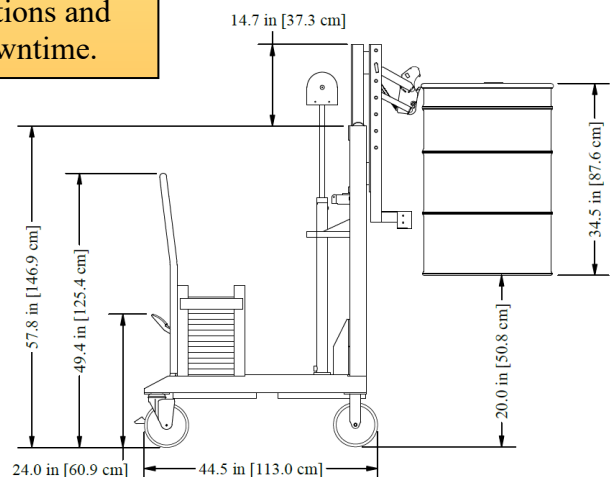
*Contingent on equipment configuration.

Drum Lift Height: 20" (50.8 cm)

Length: Approx. 48" (121.9 cm)

Width: 24" (61 cm)

Lowered Height: 57.8" (146.8 cm)



EASYLIFT KEG TRANSPORTER (ELK)

EASYLIFT KEG TRANSPORTER, model ELK20040DC for beer kegs, are designed to lift kegs in and out of trucks and onto shelves in beer coolers. A fixed single jaw design mechanism lifts the keg by utilizing one of the keg's already existing round or oval "handle" openings on the upper portion of the keg. Standard models provide 40" (101.6 cm) of vertical lift but can be built to fit any customers' lift and door height requirements. An optional load platform can easily be exchanged in place of the clamping mechanism for lifting, placing, or removing cases on and off shelves.



EASYLIFT EMPTY DRUM STACKER (EL10072DC)

EASYLIFT EMPTY DRUM STACKER, also known as EL10072DC, is designed to stack empty steel 55-gallon drums in trailers and helps prevent back injuries associated from manual handling drums. The EL10072DC has a tall single stage mast with DC powered lift and gravity down functions by means of a switch on the top of the cabinet. Fully charged, this model is capable of triple stacking up to 240 empty drums into a trailer on a single charge. The outer mast has several closely spaced adjustment settings to enable the operator to position the clamping mechanism in the proper position, as drum heights vary. The EL10072DC is equipped with a master disconnect switch, battery discharge indicator, automatic battery charger, ergonomic casters, a step-down foot floor lock, and is finished in safety yellow powder coating for durability.



ALTERNATE CLAMPING OPTIONS

EG1 SINGLE CLAMPING MECHANISM for handling a steel or plastic chimed drum.



EG1
Black Powder Coated Clamp



EG1SRC
Spark Resistant Clamp

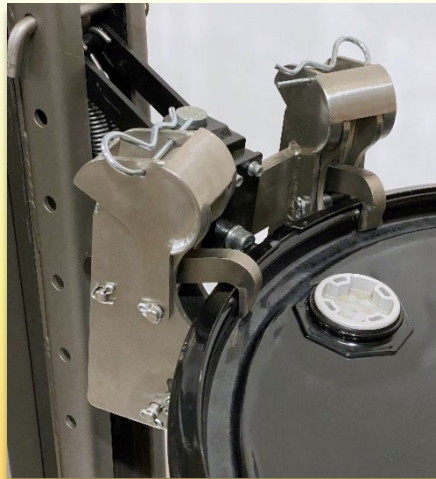


EG1M
Mauser Clamp

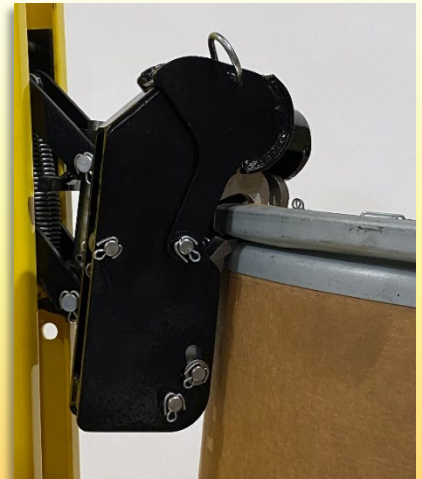
EG2L DOUBLE CLAMPING MECHANISM for handling a steel, plastic or fiber chimed drum (minimum 17" diameter, designed for working with an open top drum or a plastic/fiber drum over 600 lbs. [272 kg]).



EG2L
Black Powder Coated Clamp



EG2LSRC
Spark Resistant Clamp



EG2L Clamping a Fiber Drum
with Fiber Drum Guards

ADDITIONAL OPTIONS

SCALE SYSTEM AND/OR PRINTER. All models are available with scales and an optional printer for verifying drum weights or performing inventory. Scales are extremely accurate and eliminate the need for floor scales. Available for both intrinsically safe and non-intrinsically safe applications and from several indicator manufacturers.



ADDITIONAL OPTIONS (CONT.)

FDA COMPLIANT METALLIC GRAY POWDER COATING. “FDA” compliant metallic gray powder coating with coated lift chains, food grade grease and food grade hydraulic fluid. Includes a spark resistant clamp, anti-static grounding strap and a rubber belt to rest against the lower side of the drum.



STAINLESS-STEEL CONSTRUCTION. All 304 Stainless-Steel models are available with any lift height or power option (excluding select lift cylinders and other components).



INCREASED LIFT HEIGHT. All Ergonomic, Narrow Aisle and Counterbalance models offer increased lift heights of 40” (101.6 cm) and 60” (152.4 cm) above floor level for double or triple stacking drums, or the ability to pick and place drums to and from shelves.



ADDITIONAL OPTIONS (CONT.)

FIXED OR FOLDING JIBS. A variety of fixed or folding jibs are available for lifting a variety of objects. Jibs are available in lengths to suit customer specific applications.



HAND BRAKE. Hand brakes are ideal for traveling down slight inclines. The brakes are located on the front 8" (20.3 cm) casters. The hand brake control is located on the equipment handle, allowing quick, convenient control by the operator.



30-DAY FREE TRIAL TOWARDS PURCHASE PROGRAM FOR FIRST TIME BUYERS.



Easy Lift Equipment, Inc.
2 Mill Park Ct.
Newark, DE. 19713
800-233-1800
or 302-737-7000
Fax: 302-737-7333
Email: sales@easylifteqpt.com
www.easylifteqpt.com

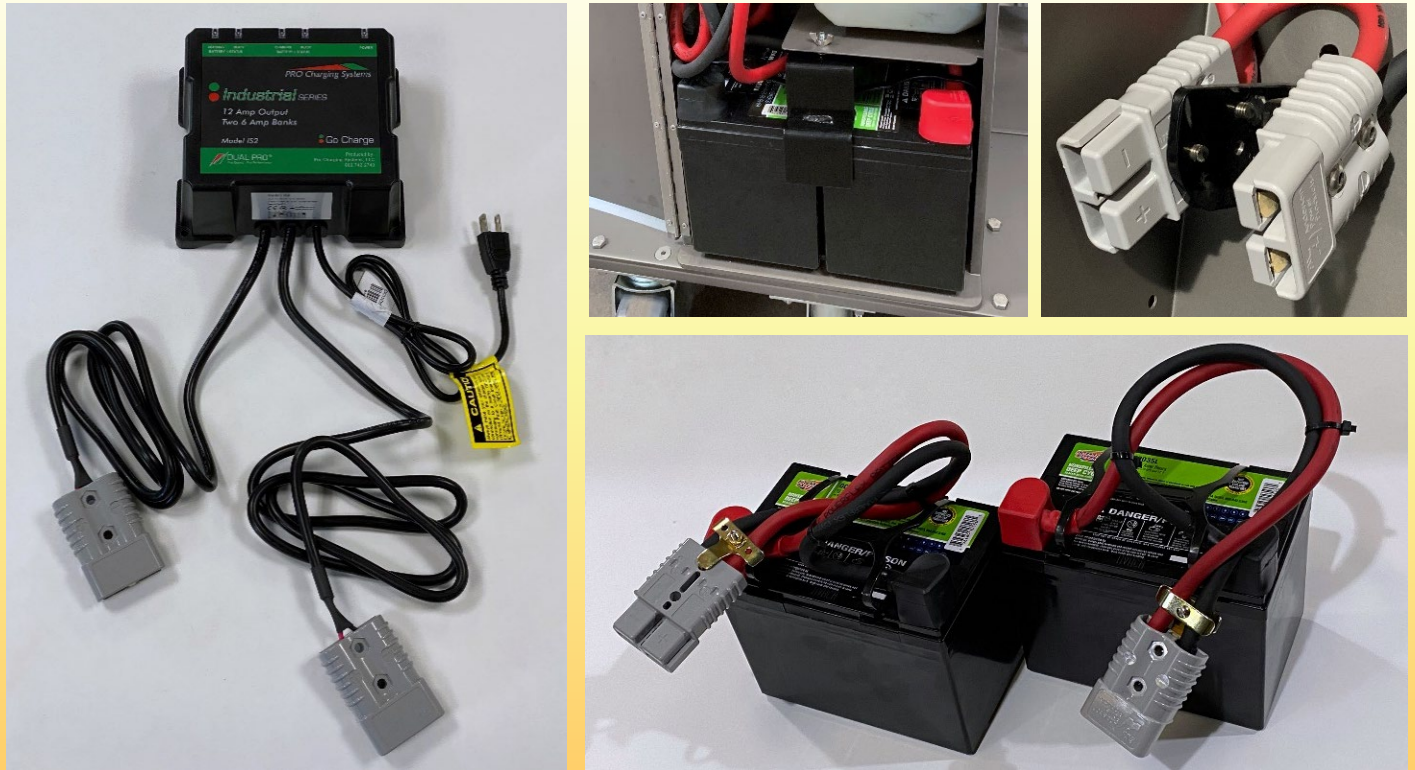
**EASY LIFT EQUIPMENT, INC. IS AN
ISO 9001: 2015 CERTIFIED COMPANY**



**ISO 9001: 2015
Certified Company**

DRUM TRANSPORTERS – EXCHANGEABLE BATTERY OPTION

EXCHANGEABLE BATTERY OPTION (without charging stand) includes an external charger (in lieu of an internal charger), two sets of 12-volt AGM batteries, and all the necessary quick disconnects, including inside the DC Box.



EXCHANGEABLE BATTERY OPTION (with charging stand) includes a wall-mounted charging stand (with an external charger already affixed to the stand, in lieu of an internal charger), two sets of 12-volt AGM batteries, and all the necessary quick disconnects, including inside the DC box. The DC charging stand is designed to be wall-mounted but can also be placed directly onto a shelf or other location.

